

Informatic, Smart Link

Version 4.x

CONTEXT 4.0

Electronic Dictionaries System for Windows

User's Guide

2000

Copyright Notice

Copyright 1991-2001 Informatic, Russia and Smart Link Corp. USA. All Rights Reserved.

This software product is copyrighted and all rights are reserved by Informatic and Smart Link Corporation.

All parts of the software product documentation are copyrighted and all rights are reserved. The documentation may not, in whole or part, be copied, photocopied, reproduced, stored, translated or reduced to any electronic medium or machine readable form without prior consent, in writing, from Informatic and Smart Link Corporation.

Information in this document is subject to change without notice and does not represent a commitment on the part of Informatic. The software described in this document is furnished under a license agreement. The software may be used or copied only in accordance with the terms of the agreement. It is against the law to copy Context 4.0 for any purpose other than the personal use of the customer.

Context 4.0 is a trademark of Informatic.

IBM and PS/2 are trademarks of International Business Machines Corporation. Microsoft MS-DOS and MS Windows are trademarks of Microsoft Corporation. Other brand and product names are trademarks or registered trademarks of their respective holders.

All trademarks are acknowledged.

Published and Distributed by:

Smart Link Corporation
18401 Von Karman Ave., Suite 450
Irvine, CA 92612
Tel: 949 552 1599 Fax: 949 552 1699
E-mail: smrtlnk@smartlinkcorp.com
www.smartlinkcorp.com www.paralink.com

Copyright

This Manual is copyrighted by Smart Link Corporation with all rights reserved. Under the copyright laws, this Manual cannot be reproduced in any form without the prior written permission of Informatic and Smart Link.
© 2001 by Informatic and Smart Link Corporation.

Contents

Introduction	5
CONTEXT Unique Features	5
Contents of the package	6
System Configuration Requirements	6
Chapter 1. Installing and Starting CONTEXT	7
Installing CONTEXT Interface Program	7
Installing CONTEXT Dictionaries	9
Using CONTEXT	11
Registration of Try & Buy Copy of CONTEXT	12
Chapter 2. CONTEXT Main Window General Information ...	13
The Main CONTEXT Window Components	13
Displaying or Hiding Show ToolTips	16
Displaying or Hiding CONTEXT menus	17
Font Selection	17
Getting Help	18
Chapter 3. Using CONTEXT	19
Viewing Translations	19
Words Translation	20
Word Collocations Translation	20
Viewing CONTEXT Glossary List	21
Reverse Translation	22
Translation Search in All Dictionaries	22

Contents

Chapter 4. Using CONTEXT from Applications 24

Using CONTEXT in MS Word	24
Setting Up Link with MS Word	24
Word Translation from any Application	24
Inserting Translations into Original Text	25
CONTEXT Activation Using Hotkey	26

Chapter 5. User Dictionary 27

General Information	27
Editing User Dictionary	28

Chapter 6. Technical Information 30

CONTEXT Specialized Dictionaries	30
CONTEXT English - Russian Specialized Dictionaries	30
CONTEXT Multilingual Dictionaries	36

Introduction

You have selected to use electronic dictionaries system CONTEXT 4.0.

This version incorporates the latest achievements in the software development made possible by Informatic Co. and Smart Link Corporation.

New in this version:

- Improved interface
- Enhanced search engine
- New feature of attaching supporting dictionary to the word search
- Show all available word combinations when searching a phrase or collocation
- New installation to MS Word

CONTEXT Unique Features

CONTEXT is an intelligent bi-directional computer dictionary, which includes an advanced interface program and an extensive set of common and specialized dictionaries.

CONTEXT's unique feature is knowledge of the language morphology. It, therefore, can recognize and translate words and phrases in any grammatical form.

The number of the CONTEXT dictionaries and their content are growing continuously. Currently CONTEXT includes hundreds of thousands of entries (a few millions of recognizable words).

CONTEXT translates words and phrases back and forth without any special setup, using the same set of dictionaries. The translation search may be carried out using the entire set of dictionaries, or one particular dictionary only. The set of active dictionaries included in the search and the sequence in which the dictionaries are used, may be easily modified.

Introduction

Work with CONTEXT is easy and convenient. Just enter a word or phrase you want to translate into the CONTEXT entry field, and the search may be initiated with one click of the mouse.

It is especially convenient to work with CONTEXT from any Windows application, for example, Microsoft Word. Just place the cursor on a word you want to translate and press the CONTEXT button on the Word toolbar.

Contents of the package

The Pocket CONTEXT package contains:

- CD-ROM
- CONTEXT User's Guide
- License agreement
- User registration card

Be sure to fill out and mail the enclosed registration card to Smart Link Corporation. This will assure your free technical support.

System Configuration Requirements

The following is required for installation of CONTEXT 4.0:

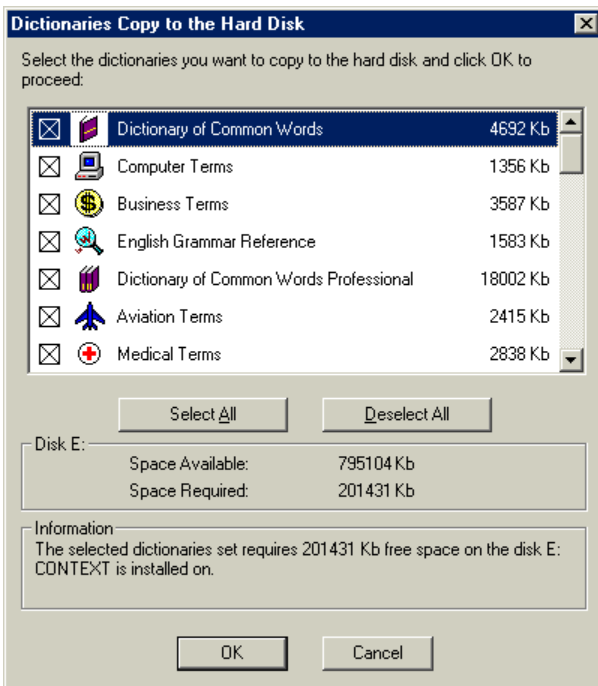
- Windows 95/98/ME or Windows NT/2000
- CD-ROM drive
- 6 MB of hard drive free space for the interface program and auxiliary files installation. Additional space for dictionaries is required, which is specified by the installation program for each dictionary (total 200MB).

Chapter 1.

Installing and Starting CONTEXT

Installing CONTEXT Interface Program

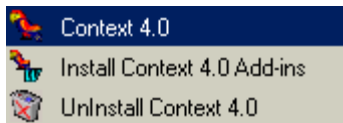
- Insert CONTEXT installation CD-ROM into the disk drive.
- Click the *Start* button and choose *Run*.
- Type *d:\install.exe* (or an appropriate letter) and *press OK*.
- Enter your name and the name of your company in the fields provided.
- Enter the Serial number (if required), or leave the space blank to install CONTEXT in trial mode.
- Confirm or select the drive and folder for CONTEXT installation.
- At this point you may choose to copy all dictionaries to the hard disk.



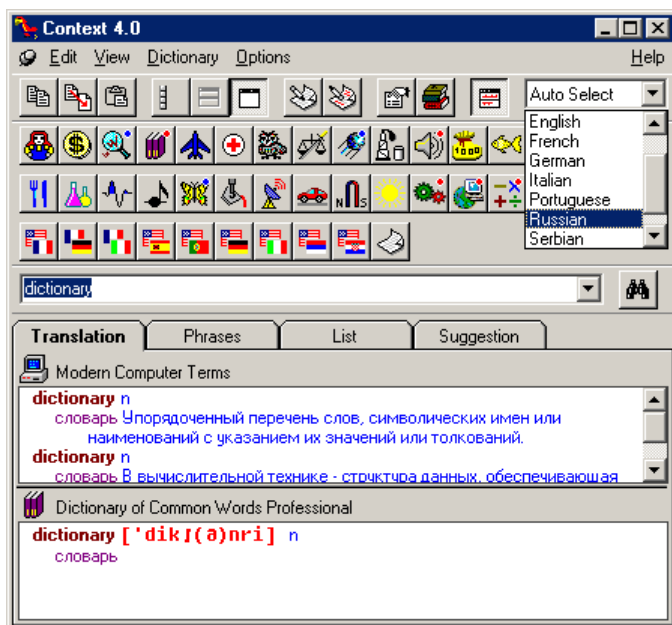
To copy all dictionaries at once, press *Yes*

Installing and Starting CONTEXT

During installation, the CONTEXT installation program will create "Context for Windows 4.0" Program Group.



To start CONTEXT, double-click the CONTEXT icon.



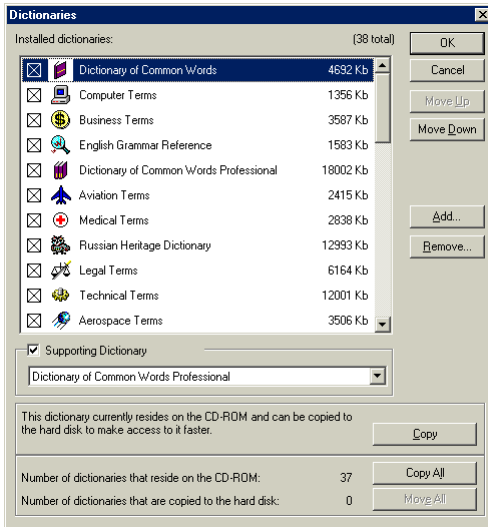
The main CONTEXT window will appear:
Additional CONTEXT's dictionaries may be installed at this point.

Note: To uninstall CONTEXT, use the *Uninstall CONTEXT* command from the Program group.

Installing CONTEXT Dictionaries

To install dictionaries from the CD-ROM to the hard disk, choose Options/Dictionaries menu from the Main Context window.

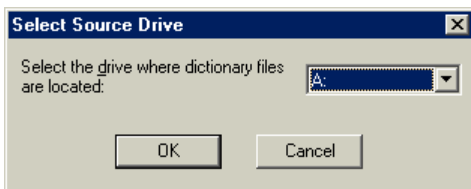
The Dictionaries dialog box appears:



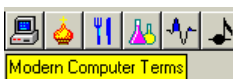
- You may choose to install all dictionaries or the selected ones only. To copy all dictionaries at once, press the *Copy All* button.
- To copy only the selected dictionaries, highlight the desired dictionaries one by one and press the *Copy* button. The program will copy the selected dictionaries from the CD-ROM to your hard disk. The dictionary residing on the hard disk will be marked.
- To change dictionaries sequence, use the *Move Down* and *Move Up* buttons. This may also be done through the CONTEXT Dictionaries Bar using Drag-and-Drop technique. Point the cursor to the dictionary icon to change its position, press and hold down the left mouse button, and drag it to a new location.
- To exclude a dictionary from the current work session, clear the corresponding dictionary check box.

Installing and Starting CONTEXT

- To remove dictionaries already installed on your hard disk, click the *Remove* button.
- To save space on your hard disk, use dictionaries from the CD-ROM. Move the dictionaries residing on your hard disk back to the CD-ROM. To move all the dictionaries, select the *Move All* button. To move only the selected ones, highlight a desired dictionary and press the *Move* button.
- To install dictionaries from the diskettes, choose *Options/Dictionary* menu from the Main CONTEXT window. The Dictionaries dialog box appears. Click the *Add* button.



- Select the letter of the appropriate floppy disk drive. Insert the dictionary diskette and press *OK*. To install another dictionary, repeat the steps described above.
- To see the name of the dictionary, point the cursor to its icon and pause. CONTEXT displays its name in a ToolTip.



- To use the Supporting dictionary during a translation search, mark the Supporting dictionary check box and select the dictionary to be used from the dictionaries' list. The supporting dictionary attached, CONTEXT will be searching words and phrases in two dictionaries simultaneously giving more accuracy and choices.

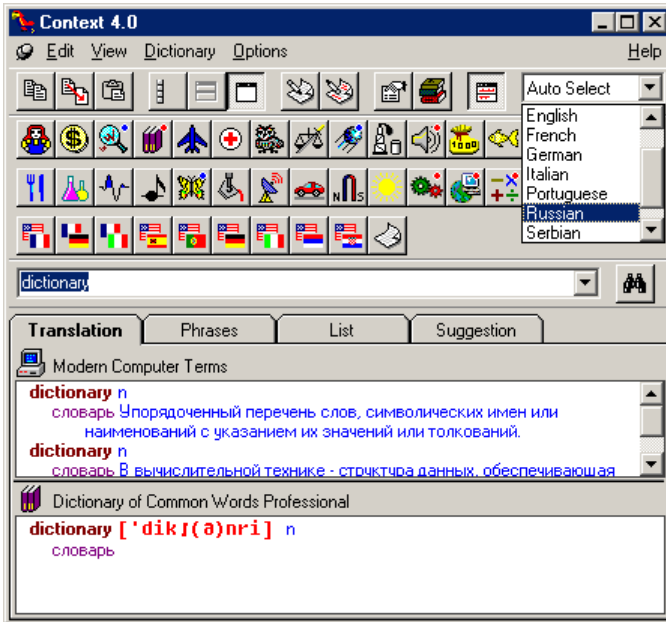


- The Supporting dictionary can be temporarily detached from search by clicking the Supporting Dictionary icon on the Toolbar

Using CONTEXT

To look up a word or phrase, type it in the CONTEXT Word entry field. Press Enter or a dictionary icon on the toolbar.

CONTEXT translation window displays the following information:



The pressed dictionary button indicates the dictionary, in which the translation has been found.



You can initiate the translation search from all dictionaries at once, by pressing icon of the binoculars.

CONTEXT recognizes words entered in any form due to its "knowledge" of the language morphology; it automatically transforms entered words into their respective dictionary forms.

Installing and Starting CONTEXT

Registration of Try & Buy Copy of CONTEXT

If you choose not to register CONTEXT now, then this software will be fully functional only for a 30 day trial period.

You can register CONTEXT at any time. To register your product, click the *Register* button when reminded. The product registration dialog box appears.

Trial version registration

How to register the trial version

To register trial version of CONTEXT, contact your CONTEXT distributor:

Smart Link Corporation
18401 Von Karman Ave., Ste. 450, Irvine, CA 92612
Phone: (949) 552-1599 Fax: (949) 552-1699
E-mail: smtlnk@smartlinkcorp.com

and tell the ID number of your trial version:

1688448037

We shall explain you how to register. After you pay for your copy of CONTEXT, we shall tell you the serial number and access code that will transform your trial version into the working one.

If you have already registered the trial version, enter your serial number and access code:

Serial number:

Access code:

OK Cancel

Enter the *Serial Number* of the product.

Your unique *Product ID* number appears in the top field. Forward this *Product ID* and *Serial Number* to Smart Link Corporation to obtain the *Access Code*.

Enter the Access Code into the last field and click *OK* to activate your product.

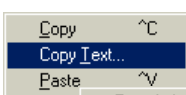
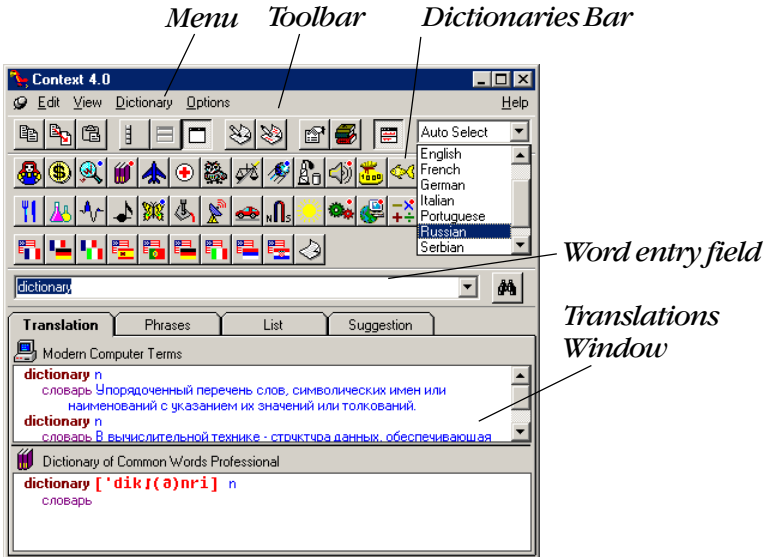
We provide unlimited free technical support, discounted upgrades and special offers only to our registered users.

Chapter 2.

CONTEXT Main Window General Information

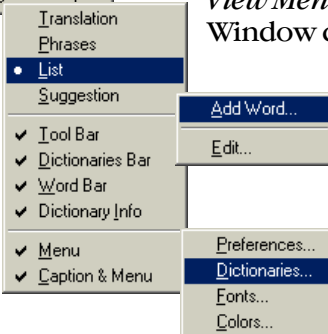
The Main CONTEXT Window Components

CONTEXT main window consists of the following components:



Edit Menu- operations in Text Windows

View Menu - displays CONTEXT Main Window components



Dictionary Menu - operations with the User dictionary

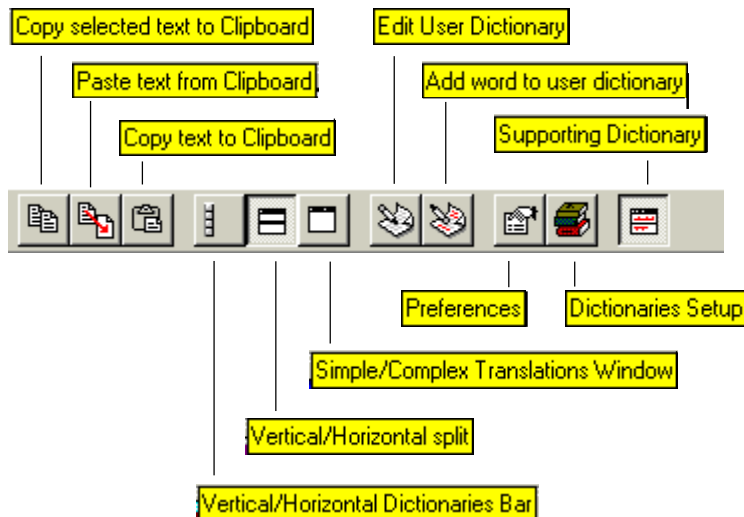
Options Menu - main user's settings (Fonts, Colors, Language, Dictionaries selection)



There is also a switch pin button to set the Context window "always on top".

CONTEXT Main Window General Information

Major Main Menu functions are duplicated by the Toolbar buttons located below the Main Menu.



The *Auto Select* option provides automatic detection of the language while entering a word into Context entry field. The input language can be also set manually, by selecting a corresponding language from the pull-down menu.

Dictionaries Bar contains CONTEXT dictionaries icons.



Pressing one of these buttons initiates the translation search within a selected dictionary.

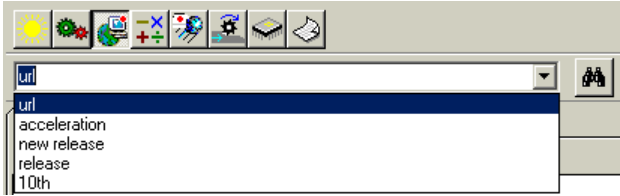
Note: CONTEXT dictionary toolbar does not contain all dictionaries buttons, but only the active ones, specified in the Dictionaries Window. Buttons are arranged (from left to right) in the sequence set in the Dictionaries Window.



Dictionaries Bar orientation may be changed from horizontal to vertical by clicking the corresponding button of the Toolbar menu.

CONTEXT Main Window General Information

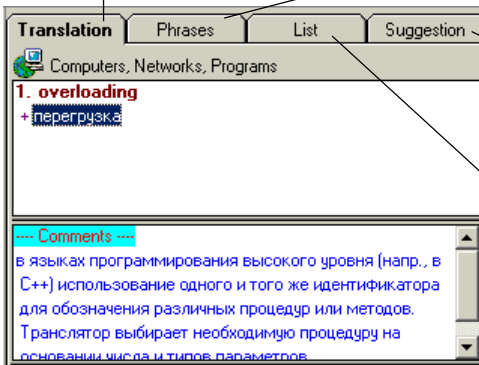
The word entry window is located below the CONTEXT Dictionaries Bar menu. It contains a drop-down list of all previously searched text lines (Search History). To display this list, press the down-arrow button.



The Translation window has four tabs: *Translation*, *Phrases*, *List* and *Suggestion*.

Translation Tab
displays word or
phrase translation

Phrase Tab
displays list of phrases
containing a searched word

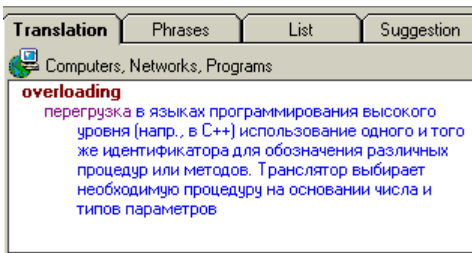


Suggestion Tab
displays list of
spelling suggestions

List Tab
displays glossary
(alphabetical list)



The translation window display mode can be changed (from full- window to split-window) by pressing the appropriate button of the Toolbar.



CONTEXT Main Window General Information

The split-window display mode is very convenient when working with an individual translation element. This window can be split into two panes.

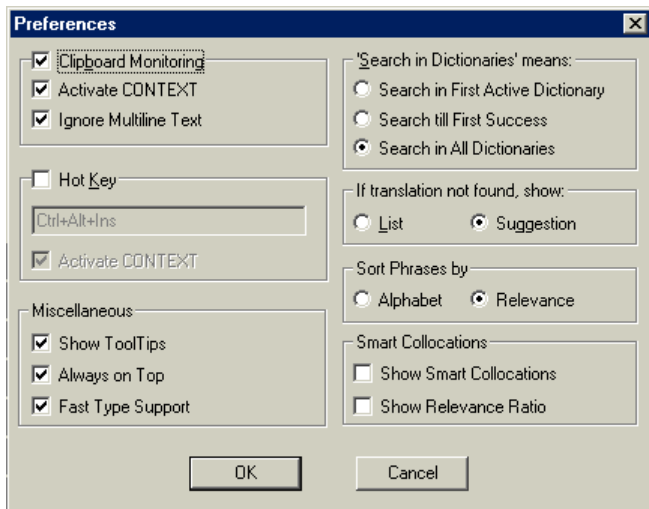


To switch between vertical or horizontal orientation, use the *Split* button of the Toolbar menu. To restore previous orientation, click this button again.

Displaying or Hiding Show ToolTips

Information on the function of any CONTEXT main window button is provided via *Tool Tips*, when you point the cursor to the appropriate button and pause.

To prevent CONTEXT from displaying *ToolTips*, clear the check box *Show ToolTips* in the *Option/Preferences* dialog box.



To display the Preferences dialog box, press the corresponding button located on the Toolbar. This button duplicates the Option/Preferences menu functions.

CONTEXT main window may be set to be Always on Top. To do that, select *Always on Top* in *Option/Preferences/Miscellaneous* dialogue box.

Displaying or Hiding CONTEXT menus

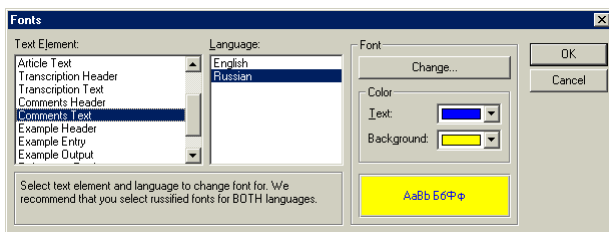
To create a convenient working environment, CONTEXT allows to hide all window components except the Translation window by clearing the check mark next to the *Toolbar*, *Dictionaries bar*, and *Word bar* items in the View menu.



To restore hidden elements, use a shortcut menu activated with a click of the right mouse button anywhere within CONTEXT main window. When the menu appears, highlight the required line to display it. You can use the shortcut menu method to hide windows components as well.

Font Selection

Fonts (type, size and background colors) used for Translation windows, dialog boxes and *ToolTips*, may be specified via *Fonts* dialog box (*Options/Fonts* menu).



If you intend to change the font displaying a searched word, select *Article Title* in *Fonts/Text Element* dialog box.

- To define the font for the entered text, select *Thin Dialog Text* item.
- To define the font for a group of synonyms, select *Article Text* item.
- To define the font for comments, select *Comments Header*, etc.

CONTEXT Main Window General Information

In addition, text, background color and special settings (strikeout, underlined) may be selected in the same dialog box.

Note: *Improper font selection of the dialog window texts may render them illegible.*

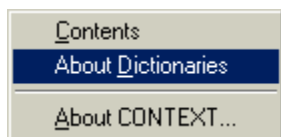
The following setup is recommended:

- *Regular dialog text - Context Sserif, size 8.*
- *Thin dialog text - Context Sserif, size 8.*

This font size is recommended for the monitor resolution of 640X480 or higher; in case Small Fonts preference is selected. If Large Fonts are preferred, for high monitor resolution values, use size 12.

Getting Help

CONTEXT comes with Help, a complete online reference tool, that includes summary of this User's Guide.



Help/About Dictionaries provides information about CONTEXT dictionaries.

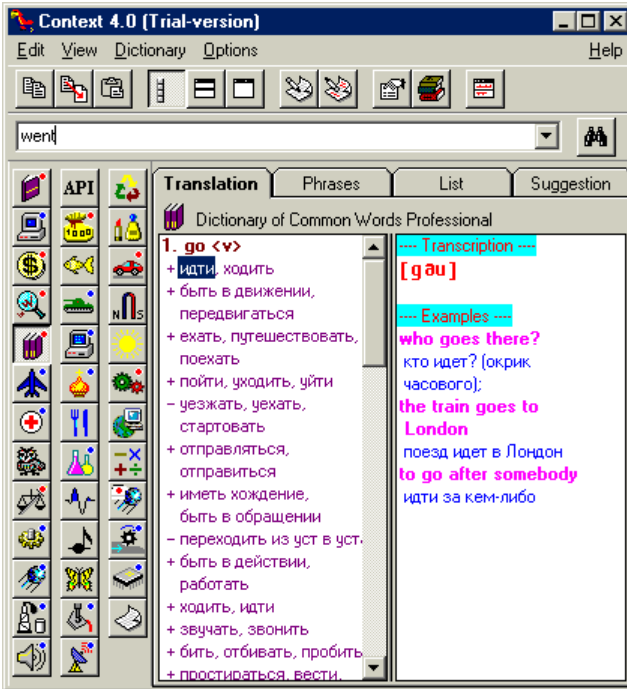
Help/About option provides information on current CONTEXT version, software developer, Informatic Co. and Smart Link Corporation.

Chapter 3.

Using CONTEXT

Viewing Translations

To initiate a search, enter a word or expression into the Word entry field and press the corresponding dictionary button. The following window appears:

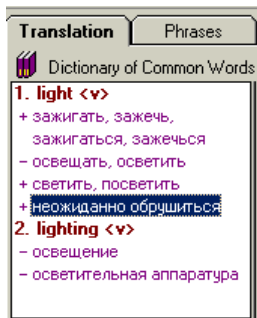


The Translation Windows displays information on a searched word or word collocation and its translation with information on the part of speech.

Each translation is marked with "+" or "-" mark, and the synonyms separated by commas.

The "+" sign suggests that this word is accompanied by Comments and Examples. The *Comments and Examples* may be viewed only if the word with a "+" sign is highlighted.

Words Translation

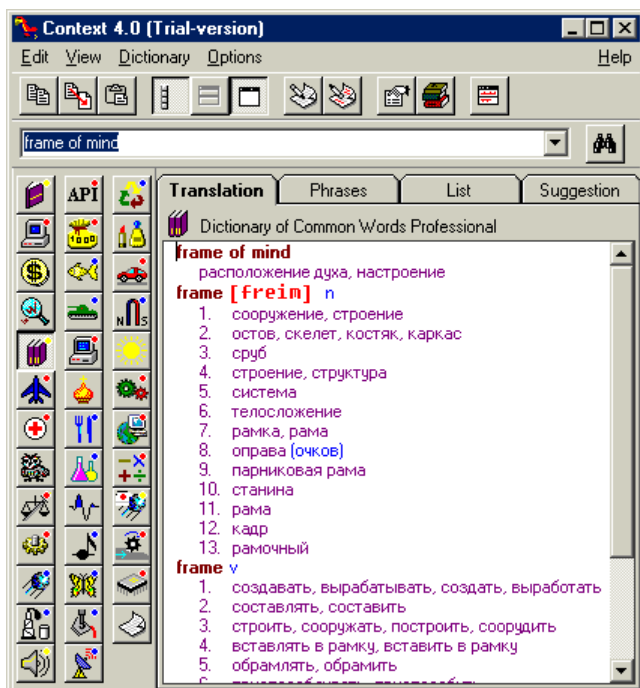


Unlike the majority of competing programs, CONTEXT translates words not only in its basic but in all morphological forms ("go", "gone", "went" etc.).

For example, if you enter the word "lit", the *Translation* window will display the entered word in its initial form "light" and its translation as a group of synonyms.

Word Collocations Translation

CONTEXT can translate not only single words, but numerous word collocations. For example, if you enter the expression "frame of mind" and select dictionary of Common Words, the following translation will appear:



CONTEXT provides translation not only for the entire word collocation. Depending on the position of the cursor within a word collocation, CONTEXT displays the translation of the "*word on the cursor*" which is "*frame*" as well.

For example, if the cursor was pointed to the word "*mind*", instead of the word "*frame*", then the translation for the word "*mind*" would have appeared.

This illustrates the importance of the cursor position on the "*word on the cursor*". In fact, CONTEXT always initiates the translation search for the "*word on the cursor*" first.

Viewing CONTEXT Glossary List

In case CONTEXT cannot find a word, it will display a list of surrounding words in the Translation window. The word, closest to the searched one will be highlighted.

You can select the closest word between two criteria - alphabetical (tab *List*) and linguistic (tab *Suggestion*). In the latter case, CONTEXT displays the list of words similar to the list of suggestions in the spellchecker.



To activate this capability, select the option "*If translation not found, show:*" from the menu *Options / Preferences*.

If you are not quite sure about the spelling of a searched word, select *Suggestions*, and CONTEXT will display the list of suggestions from the first active dictionary.

Double-click the highlighted word. It will appear in the CONTEXT entry field along with its translation. To view the List, use the scroll bar or the Up and Down arrow keys. To move directly to the required word, enter its initial letters from the keyboard.

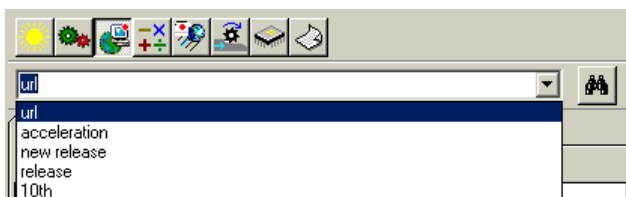
For your convenience, the *Fast Type Support* turns on or off automatic suggestion of a next character. This option is set by default in the *Option/Preferences* menu.

While CONTEXT displays the List, the *Translation* and *Phrases* tabs are inactive and their tabs titles are dimmed.

Reverse Translation

Any text element in the left part of the Translation window may become the initial information for the reverse translation. To use this option, highlight any translation and double-click it. CONTEXT will transfer this line into the editing field and will translate it.

Any text for which the translation search has been conducted once is transferred into the drop-out list of the Editing field (History). Thus, it is possible to return to previously searched words without entering them anew.



Note: *Reverse translation is provided using the same dictionary which has been used for the original translation.*

Translation Search in All Dictionaries

CONTEXT utilizes two dictionary search modes: search within one particular dictionary and search within all active dictionaries.



Search in All Dictionaries is carried out in the order, in which the corresponding dictionary buttons are located on the Dictionaries Bar. This order may be modified using *Move Up* and *Move Down* buttons of the *Dictionaries* dialog box. It may also be changed by the standard Drag-and-Drop procedure.



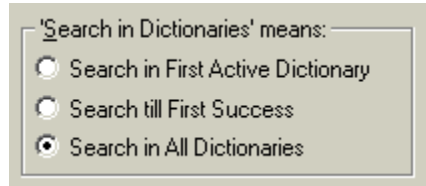
Further CONTEXT operations depend on the functions selection under Search in Dictionaries of the *Preferences* dialog box in *Options/Preferences* menu.

Search in First Active Dictionary

The search is conducted within one selected dictionary, which button is located first in the Dictionaries Bar.

Search till First Success

The search is conducted within all active dictionaries until the exact translation is found.



Search in All Dictionaries

The search is conducted within all active dictionaries; the translation displays the most complete information.



Note: *The dictionary used for translation is marked with a pressed icon.*

In *Search in All Dictionaries mode*, CONTEXT marks the dictionaries buttons with the large color dots designating the type of information found in the dictionary (translation of phrases, translation of words or word as part of a phrase only).



Yellow dot - translation of the whole phrase entered for translation

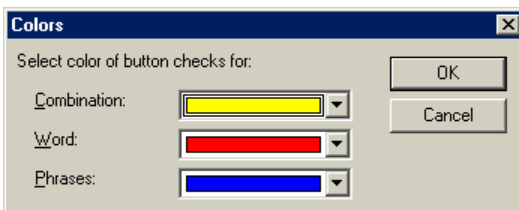


Red dot - translation of the "word on the cursor"



Blue dot - translation of the phrase containing the "word on the cursor"

Note: *To change the color of dots of the dictionaries buttons, use Color dialog window from the Options menu.*



Chapter 4.

Using CONTEXT from Applications

Using CONTEXT in MS Word



The most convenient way to use CONTEXT is to access it from MS Word. Place the cursor on a word and press the CONTEXT icon on MS Word toolbar.



You can also drag-and-drop any selected word, phrase or text fragment from MS Word to CONTEXT window to get translation.

Setting Up Link with MS Word

To establish a link between CONTEXT and MS Word, use the Program item Install CONTEXT Add-Ins.



Check the box "Microsoft Word" and press OK. This will install the CONTEXT macro into MS Word.



CONTEXT may now be activated from MS Word by clicking the Context icon on the toolbar.

Word Translation from any Application

Highlight a word to be translated and copy it to the Clipboard.



- Paste text into CONTEXT Editing field.



- Initiate translation search using any or all CONTEXT dictionaries (see Chapter 3).



- You can also use drag-and-drop technique to bring a selected word, phrase or text fragment into CONTEXT entry field. The translation of a searched element will appear automatically. To send the translation back into your document, use the same drag-and-drop method.




To complete this procedure automatically, activate *Clipboard Monitoring* option from the *Options/Preferences* menu.

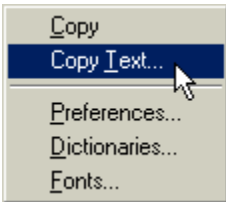
Inserting Translations into Original Text



CONTEXT can transfer translations into other applications via *Clipboard*. Any highlighted text passage from the *Translation* window may be copied to the clipboard and pasted into any application.

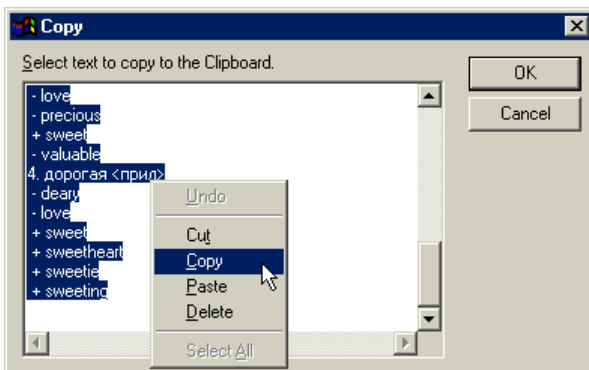


To transfer information from the split-window  or the entire contents, use CONTEXT *Edit/Copy Text* command.



The same function may be activated by clicking the right mouse button anywhere within the Translation window. Shortcut menu with the *Copy* command appears.

Select the text passage for transfer and press OK.



Using CONTEXT from Applications

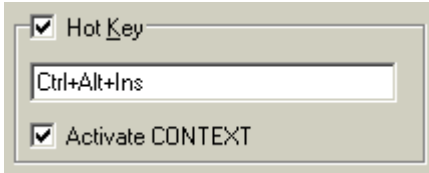
CONTEXT Activation Using Hotkey

Another way to link CONTEXT to other Windows applications is via the hotkey.



The default hotkey combination is *Ctrl-Alt-Ins*.

To use this feature, open the *Preferences* dialog and switch the hotkey *On*.



Note: To use the hotkey activation mode, CONTEXT must be activated.

Chapter 5. User Dictionary

General Information

The quality of CONTEXT dictionaries is continuously improved, and their number is growing. Nevertheless, some specialized areas of knowledge remain beyond them. With this in mind, CONTEXT provides capability to create a *User Dictionary*.

CONTEXT installation program automatically creates User dictionary file during installation.



Adding new words to User Dictionary may be done from the dialog window *Add Word to User Dictionary* (through

A screenshot of a Windows-style dialog box titled "Add Word to User Dictionary". It contains three text input fields and two buttons. The first field, labeled "Source Word or Expression:", contains the Russian text "политика 'дорогих' денег". The second field, labeled "Translation:", contains the English text "dear money policy". The third field, labeled "Comment:", contains the Russian text "направленная на стеснение кредита и повышение процентных ставок". The "OK" and "Cancel" buttons are on the right side of the dialog.

Dictionary /Add Word... menu).

The *Source Word* or Expression field is intended for a source text in any language. This text can contain a group of synonyms (word or word collocations), separated by commas.

The *Translation field* is reserved for translation of a source text. The translation can contain a group of synonyms separated by commas.

The *Comment field* is reserved for comments in any language for newly entered words.

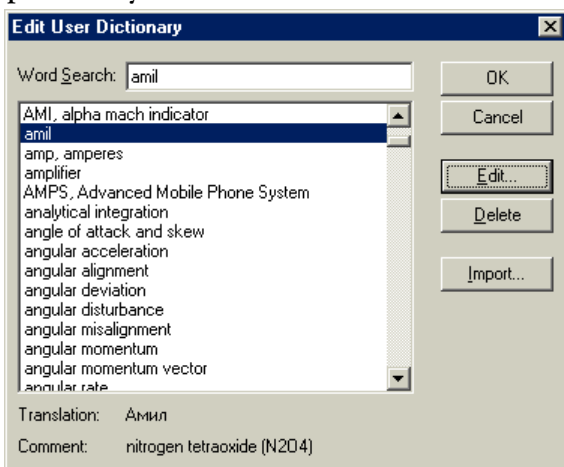
Editing User Dictionary

You can edit any information entered to User Dictionary from the *Edit User Dictionary* window.

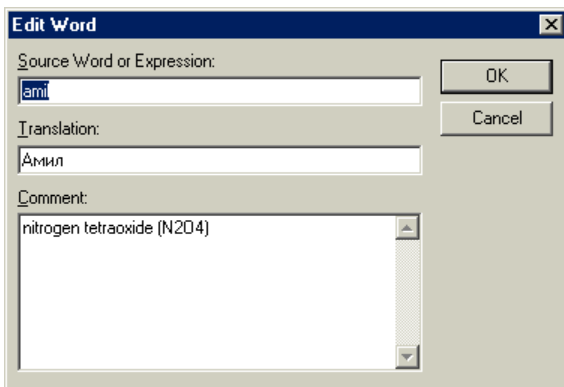


To access this window, select *Dictionary/Edit* option or press the button located on the CONTEXT main window Toolbar menu.

User dictionary editing dialog box displays the list of all previously entered source words.

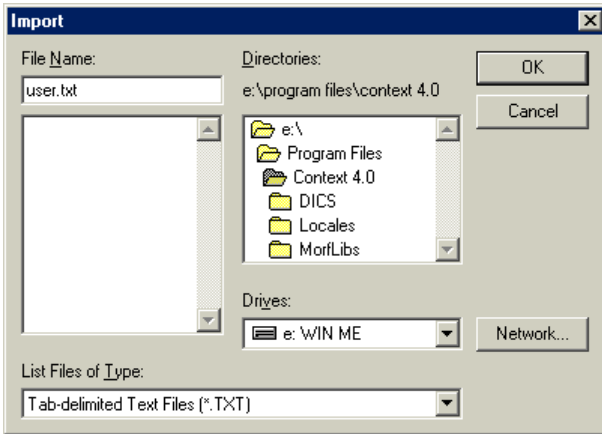


To select an entry from this list, either highlight it or use the entry field called Word Search located in the same window. Highlight the required word and press the *Edit* button. The dialog window, which appears at this point, is exactly the same as the *Add Word* dialog window.



Make the required changes and press the *OK* button.

The *Import...* button allows to add the content of a text file created within any Word Processor to your User Dictionary.



Each record (Source Word, Translation or Comment) should be separated by Tab (Tab-delimited). The existence of the first two fields (Source word and Translation) is mandatory.

Note: *The larger the User Dictionary file, the longer it takes to perform a search.*

Chapter 6.

Technical Information

CONTEXT Specialized Dictionaries

The total CONTEXT "knowledge base" contains more than 3,000,000 entries organized as library of specialized dictionaries.



These specialized dictionary modules can be added by the user to the main Interface Program at any time and in any combination

CONTEXT English - Russian Specialized Dictionaries

Advertising and Marketing.....80K entries



Covers the vocabulary used in the mass media for advertising and marketing of products and services.

Dictionaries by V. Bobrov, Russo, S. Koranlnik Russo

Aerospace terms.....40K entries



Contains terms related to rocket and aerospace technologies, space flight vehicles, control and navigation systems.

Homeware (Smart Link Corporation)

Automobile terms.....18K entries



Automobile dictionary by M. Tveritnev, Russo, 1996

Aviation Terms.....40K entries



Contains terms used in civil aviation, aircraft maintenance, aeronautic equipment and design, etc.

Homeware (Smart Link Corporation)

Biology.....28K entries



Homeware (Smart Link Corporation)

Business terms.....60K entries



Provides access to terms and expressions commonly used in business correspondence, trade, banking operations, stock exchange and other related areas.

Homeware (Informatic)

Chemical terms.....90K entries



Dictionary of Chemistry by A. Grouznov, T. Oreschenkova

Common Words70K entries



Contains common words and expressions for both English and Russian languages

Based on the dictionary by Akhmanova

Common Words Professional.....180K entries



Contains common words and expressions for both English and Russian languages

Based on the dictionary by Muller

Computer Abbreviations.....50K entries



Includes a great variety of abbreviations used in Information Technology field along with their definitions and explanations.

Homeware (Informatic)

Computer terms.....20K entries



Contains entries related to hardware and software, programming, information and operating systems terminology used in modern computer world.

Homeware (Informatic)

Computers, Programs, Internet.....16K entries



Dictionary by E. Projdakov, L. Těplíckí, SK Press, 1998

English Grammar Reference.....16K entries



Homeware (Informatic)

Technical Information

Environment..... 18K entries



Homeware (Smart Link Corporation)

Exploration Geophysics.....25K entries



Dictionary of Exploration Geophysics by A.V. Cherepovsky

Finance and Economics..... 110K entries



Covers various areas of financial activities including budgets, taxes, credit, stocks and bonds, banking and corporate finance, insurance and investments as well as terms on theoretical and applied economics, statistics and more.

Combined: Dictionary of Economics and Finance by Anikin, Homeware (Smart Link Corporation)

Food Industry.....85K entries



Contains terms on all branches of food-processing industry: milling, dairy, meat, poultry and fish processing, baking, confectionery and sugar production, wine and canned foods. The dictionary covers terms on equipment, processing, production and other terms related to this industry.

Dictionaries by V. Dashevsky, G. Bardyshev, Russo, 1995

Foreign Words in Russian Language..... 16K entries



Contains Russian words of foreign origin and the explanations of their meaning.

Homeware (Informatic)

International Fishing.....6K entries



Includes terms related to fishery, maritime law and legislation, maritime conventions, names of commercial fishes and species, catching tools and procedures related to this specific industry

Homeware (Smart Link Corporation)

Legal terms..... 110K entries



Contains words and expressions frequently used in modern legal literature, documents and daily practice.

Dictionary of Law by Andrianov, Bergson, Nikiforov, 1993, Homeware (Informatic, Smart Link Corporation)

Mathematics.....20K entries



Homeware (Smart Link Corporation)

Mechanical Engineering terms.....200K entries



Dictionary by B. Voskoboynikov, V. Mitrovich, Russo, 1997

Medical terms.....28K entries



Contains words and phraseology used by specialists practicing modern medicine.

Homeware (Informatic, Smart Link Corporation)

Metallurgy.....28K entries



Homeware (Smart Link Corporation)

Military-Political terms.....52K entries



Includes terms related to different weapons systems and their components, military types, organizations, and composition of ground, air and naval forces, military ranks, military acronyms and abbreviations as well as terminology used in military operations.

Homeware (Smart Link Corporation)

Modern Computer terms.....110K entries



Contains entries related to hardware and software, programming, information and operating systems terminology used in modern computer world.

Combined: Dictionary by Maslov and Microsoft

Music and Sound Engineering.....11K entries



Dictionary by S. Lebedev

Perfumery and Beauty Care.....36K entries



Dictionaries by S. Baranov, T. Pouchkova, Russo, 1996

Technical Information

Physics.....20K entries



Homeware (Smart Link Corporation)

Polytechnic Dictionary.....400K entries



Dictionary by D. Stolyarov, U. Kuzmin, Russo, 1997

Radio Engineering.....120K entries



Dictionary by F. Lissovsky, I. Kalugin, Russo, 1997

Religious terms.....7K entries



Contains terms used in religious literature : proper names, names of geographical places, religious holidays and services, books and prayers as well as other religious realities.

Homeware (Smart Link Corporation)

Russian Heritage Dictionary.....90K entries



Contains words and expressions based on the Russian Heritage Dictionary. This dictionary provides extended explanation of Russian words, proverbs and expressions along with common examples of their use.

Based on the dictionary by Ozhegov, Dictionary of Foreign Words by Fedorov, and Dictionary of Russian Phraseology

Russian Idioms.....2K entries



Contains Russian commonly used idioms with explanations and examples of their use given in Russian.

Homeware (Informatic)

Russian Synonyms.....30K entries



Based on the corpus of several well-known Dictionaries of Russian Synonyms and provides the user with an extended list of synonyms for each word found in the dictionary along with the brief explanation of their use.

Combined: By Eugeniya and Alexandrova, and Informatic

Oil & Gas70K entries



Covers the entire range of onshore and offshore technologies from exploration through reservoir engineering; drilling theory, practice, equipment and tools.

Homeware (Smart Link Corporation)

Solar Energy.....12K entries



Dictionary by D. Strebkov, Russo, 1995

Space Medicine.....50K entries



Dictionary by A. Gurjian, N. Khvatkov, Y. Shipkov, Russo, 1997

Technical terms.....180K entries



Contains definitions and descriptions of scientific and technological terms in automation, electronics, aviation and aerospace technology, communication and transportation, construction materials and equipment, mining, mathematics, physics, chemistry and other fields of knowledge.

Technical dictionary by Chernoukhine, 1971.

Telecommunications.....35K entries



Homeware (Smart Link Corporation)

Technical Information

CONTEXT Multilingual Dictionaries

English - Croatian Dictionary of Common Words.....88K entries



Homeware (Smart Link Corporation)

English - French Dictionary of Common Words.....110K entries



Homeware (Smart Link Corporation)

English - German Dictionary of Common Words.....110K entries



Homeware (Smart Link Corporation)

English-Italian Dictionary of Common Words.....110K entries



Homeware (Smart Link Corporation)

English-Portuguese Dictionary of Common Words.....110K entries



Homeware (Smart Link Corporation)

English-Serbian Dictionary of Common Words.....88K entries



Homeware (Smart Link Corporation)

English-Spanish Dictionary of Common Words.....110K entries



Homeware (Smart Link Corporation)

French-German Dictionary of Common Words.....110K entries



Homeware (Smart Link Corporation)

French-Italian Dictionary of Common Words.....110K entries



Homeware (Smart Link Corporation)