

**ParaType**

Version 3.0

# PARAWIN ME PRO

Dynamic Localization Software for Windows 95/98/ME

**User's Guide**

# Copyright Notice

Copyright 1995-2000, ParaType International. All Rights Reserved.

This software product is copyrighted and all rights are reserved by ParaType International.

All parts of the software product documentation are copyrighted and all rights are reserved. The documentation may not, in whole or part, be copied, photocopied, reproduced, stored, translated or reduced to any electronic medium or machine readable form without prior consent, in writing, from ParaType .

Information in this document is subject to change without notice and does not represent a commitment on the part of ParaType .

The software described in this document is furnished under a license agreement.

The software may be used or copied only in accordance with the terms of the agreement. It is against the law to copy ParaWin ME Pro for any purpose other than the personal use of the customer.

ParaWin ME Pro™ is a trademark of ParaType .

IBM and PS/2 are trademarks of International Business Machines Corporation.

Microsoft MS-DOS™ and MS Windows™ are trademarks of Microsoft Corporation.

Other brand and product names are trademarks or registered trademarks of their respective holders.

All trademarks are acknowledged.

## Published and Distributed by:

Smart Link Corporation  
18401 Von Karman Ave. ste. 450  
Irvine, CA 92612

Tel: 949 552 1599, Fax: 949 552 1699, Email: [support@smartlinkcorp.com](mailto:support@smartlinkcorp.com)  
[www.smartlinkcorp.com](http://www.smartlinkcorp.com) [www.paralink.com](http://www.paralink.com)

### Copyright

This Manual is copyrighted by Smart Link Corporation. All rights reserved.

Under the copyright laws, this Manual cannot be reproduced in any form without the prior written permission of Smart Link Corporation.

© 1999 by Smart Link Corporation.

---

# Contents

<b>Introduction .....</b>	<b>5</b>
ParaWin ME Pro Features .....	5
ParaWin ME Pro Package .....	5
System Configuration Requirements .....	6
<b>Chapter 1</b>	
<b>Installation of ParaWin ME Pro .....</b>	<b>7</b>
Uninstalling ParaWin ME Pro .....	10
<b>Chapter 2</b>	
<b>Starting ParaWin ME Pro .....</b>	<b>11</b>
<b>Chapter 3</b>	
<b>Basic Operations .....</b>	<b>14</b>
Keyboard Viewer .....	14
Entering Text in Multiple Languages .....	16
Fonts .....	16
Keyboard Layouts .....	17
<b>Chapter 4</b>	
<b>Setting Up ParaWin™ ME Properties .....</b>	<b>18</b>
Keyboard Layout Controls .....	18
Adding Layout .....	19
Removing Layout .....	20
Layout Properties .....	20
Changing the Code Page .....	21
Selecting Desired Pair of Code Pages .....	23
Changing the Code Page .....	24
Changing the Code Page (Custom) .....	24

<b>Chapter 5</b>	
<b>Keyboard Layout Editor .....</b>	<b>26</b>
Basic Operations .....	27
Creating or Loading Layout Template .....	28
Saving and Activating Layout .....	28
Editing .....	28
Customizing Application Window .....	29
Changing Layout Properties .....	29
Advanced Operations .....	30
Caps Lock .....	31
Right Alt.....	31
Dead Key .....	31
<b>Chapter 6</b>	
<b>Technical Information .....</b>	<b>33</b>
FAQ - ParaWin ME Pro .....	33
Code Pages .....	35
Windows Central European (CP=1250) .....	35
Windows Cyrillic (CP=1251) .....	36
Windows Western European (CP=1252) .....	37
Windows Greek (CP=1253) .....	38
Windows Turkish (CP=1254) .....	39
Windows Baltic (CP=1257) .....	40
Font Set included in ParaWin ME Pro Package .....	41

---

# Introduction

ParaWin ME Pro is the software package that enhances multilingual capabilities of Windows 95/98 & ME operating systems. The program also expands your font collection by adding a set of TrueType Fonts supporting six different code pages (scripts).

## ParaWin ME Pro Features

- Full control over keyboard layouts allowing adding, grouping and editing existing layouts as well as creating the new ones.
- Advanced keyboard switching capabilities include an extensive list of “Hotkey” selection and context independent system-wide switching.
- Three possible Layout/Language indicator modes: taskbar indicator, movable keyboard window and resizable keyboard viewer.
- Full featured keyboard layout editor with an advanced, customizable “Dead key” function in addition to AltGr and Caps Lock modes.
- Capability to select different combinations of system and DOS text conversion fonts among six different character sets (Code Pages).

## ParaWin ME Pro Package

- ParaWin ME Pro 3 3.5-inch disks with 1.4 MB capacity or CD-ROM
- ParaWin ME Pro User's Guide
- License Agreement
- Registration Card

Make sure to fill out and return the enclosed registration card to Smart Link Corporation. Only registered customers are eligible to receive our high-quality technical support.

## Introduction

---

### System Configuration Requirements

- Hard disk with 5 MB of free disk space
- 3.5" Floppy disk drive
- Windows 95, 98 or ME operating system

---

**Note:** *PARAWIN ME PRO IS COMPATIBLE WITH ALL APPLICATIONS RUNNING UNDER WINDOWS 95, 98 or ME COMPLIANT WITH ITS STANDARD INPUT-OUTPUT PROCEDURES.*

---

---

# Chapter 1

## Installation of ParaWin ME Pro

ParaWin ME Pro Setup Wizard will help you to install and activate Keyboard Driver, Viewer and Editor modules along with the system and True Type multilingual fonts.

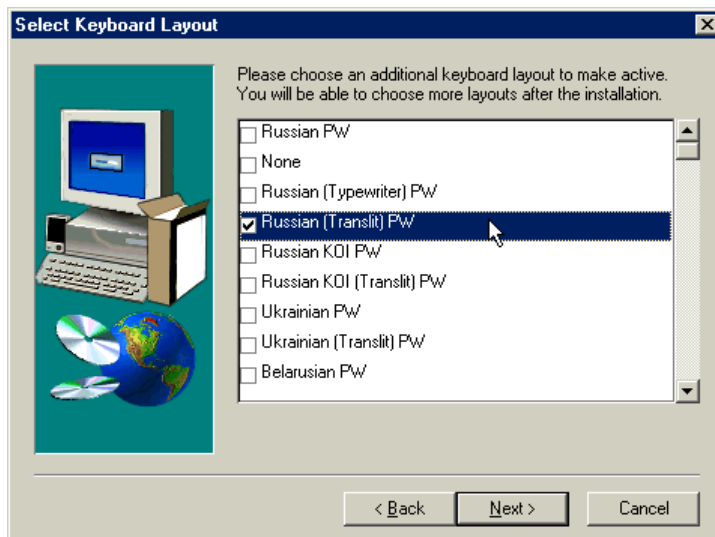
---

**Note:** THIS PACKAGE IS DESIGNED FOR INSTALLATION ON A SINGLE, STAND-ALONE COMPUTER SYSTEM.

---

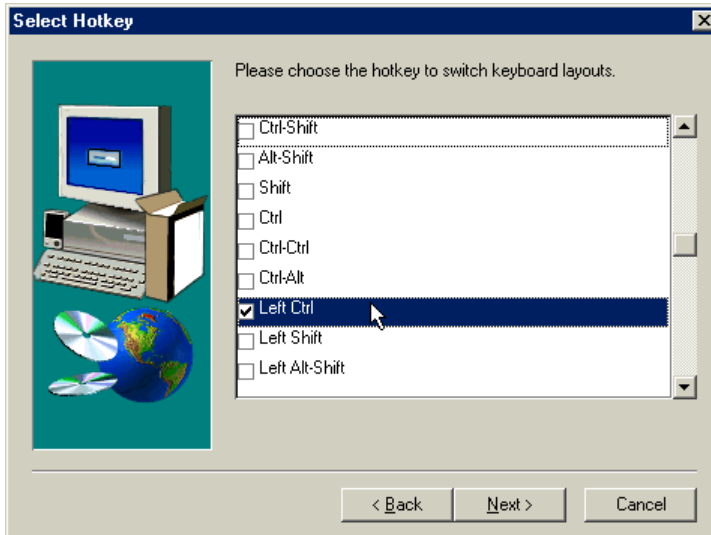
1. Insert ParaWin ME Pro distribution diskette #1 or CD-ROM into the appropriate disk drive.
2. Click the Start button on the Taskbar and choose Run.
3. Type “a:setup” (or “d:setup” ) and press OK or Enter.
4. ParaWin ME Pro Installation window will appear.
5. Follow ParaWin ME Pro Installation Wizard instructions.

Choose an additional keyboard layout to make active. You will be able to add more layouts after the installation.



# Installation of ParaWin ME Pro

Select the “Hotkey” to switch between keyboard layouts. You will be able to change the “Hotkey” selection after the installation.



During the installation you should select one of the available language settings.



## Installation of ParaWin ME Pro

During the ParaWin ME Pro installation, Setup will prompt you to select one of the following pairs of the standard character sets:

	Windows CP	MS-DOS CP
Cyrillic	1251	866
Western	1252	437
Central European	1250	852
Baltic	1257	775
Turkish	1254	857
Greek	1253	737

Any changes in Code Page settings after the installation could be accomplished using ParaWin ME Pro Properties.

The Installation Wizard will copy the program files onto your hard disk and will update the system information after the restart of Windows™ 95, 98 or ME.

---

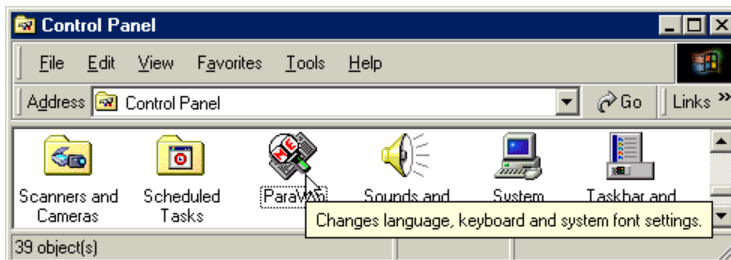
**Note:** *You can terminate the installation of ParaWin ME Pro at any time by choosing the Cancel button.*

---

After the program has been successfully installed, you will be able to find shortcuts to ParaWin ME Pro in the Program menu.



ParaWin ME Pro Icon appears also in the Control Panel.



# Installation of ParaWin ME Pro

---

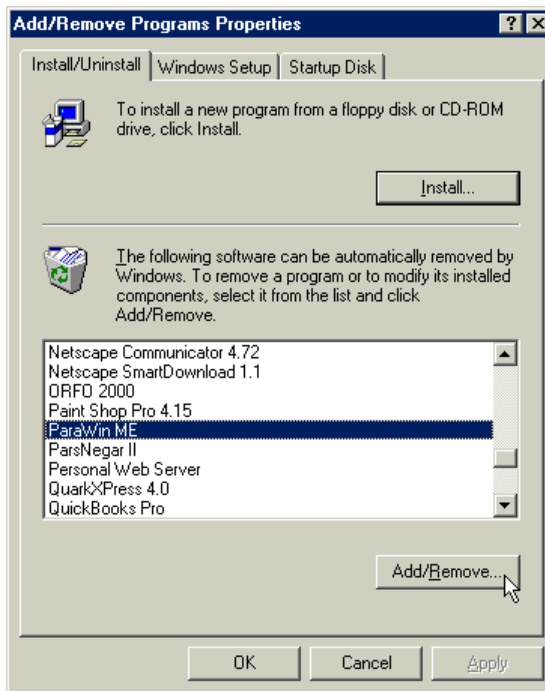
## Uninstalling ParaWin ME Pro

You can uninstall ParaWin ME Pro by using one of the following procedures:



Double-click the “*Uninstall ParaWin ME*” shortcut in ParaWin ME Pro Program menu. This will activate UninstallShield which will completely remove all ParaWin ME Pro components and restore your system settings.

Or, in *Control Panel* select ParaWin ME from the list of the installed programs, click the “*Add/Remove*” button.



---

**Note:** You have to restart your system to complete the uninstallation process.

---

---

## Chapter 2

# Starting ParaWin ME Pro

ParaWin ME Pro starts up and runs automatically each time Windows™ 95, 98 or ME is started.

In order to set desired languages and keyboard layouts in the ParaWin ME Properties panel, the following steps should be taken:

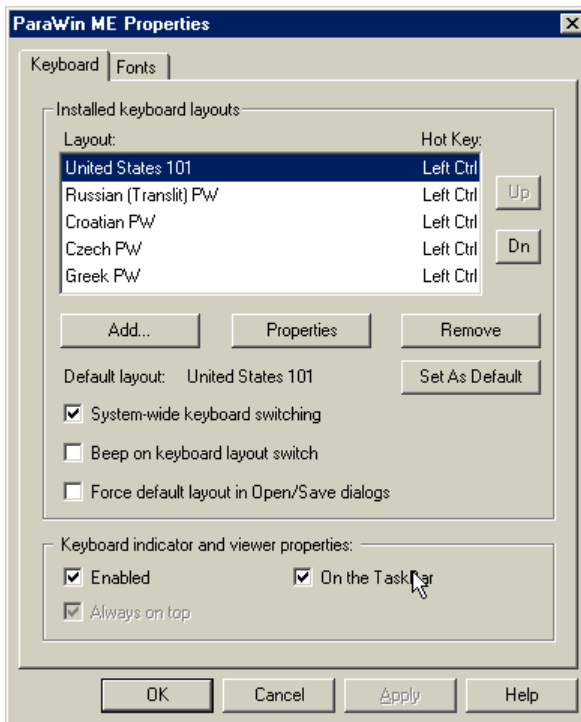
Click the *Start* button, select *Settings* and then *Control Panel*.



ParaWin

Locate ParaWin ME Pro Icon in the Control Panel and double-click.

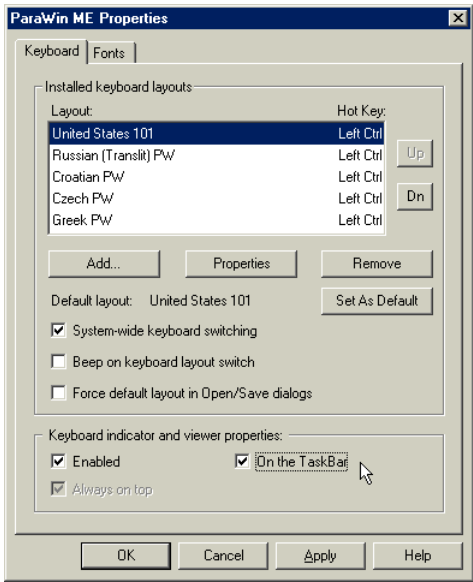
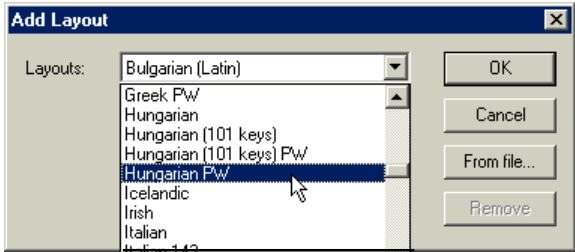
ParaWin ME Properties window will appear:



# Starting ParaWin ME Pro

Add...

Click the *Add* button, and choose the desired language layout from the drop-down list. Click OK.

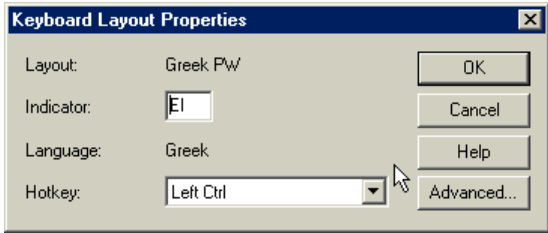


Make sure that the Keyboard indicator and viewer properties check boxes “*Enabled*” and “*On the Taskbar*” are checked.

Properties

Click the *Properties* button to open the Keyboard Layout Properties panel.

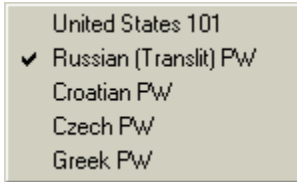
From this menu you can change the “Hotkey” combination to be used for fast switching between different keyboard layouts.





The *Language Indicator On the TaskBar* represents a two letter abbreviation of the language.

For example, “*Ru*” for Russian, “*En*” for English or “*Uk*” for Ukrainian.



Use the mouse to switch between languages/layouts and select the desired language from the list. Or, use the Hotkey (key combination).

---

# Chapter 3

## Basic Operations

### Keyboard Viewer

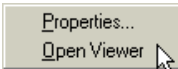
The Keyboard Viewer operates in the following three modes:

- Taskbar Indicator mode (default)
- Layout Viewer mode
- Movable Keyboard Indicator (or Collapsed Viewer) mode

After the installation of ParaWin ME Pro and the restart of Windows, the language indicator appears on the right side of the Taskbar.



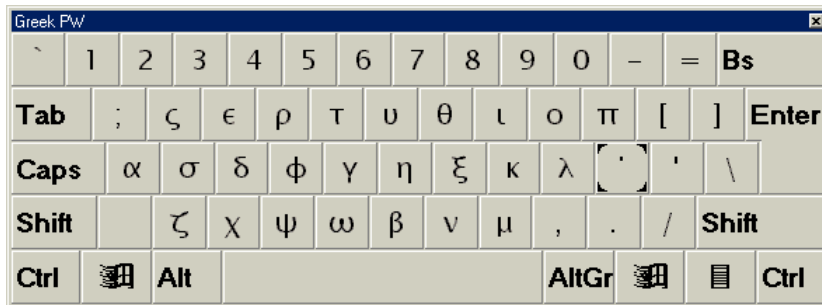
- Place your mouse pointer on the indicator and click the left mouse button. The list of currently available languages/layouts will “pop up”. The currently active layout/language is designated with the check mark.

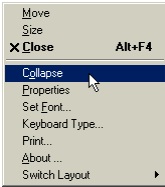


- Clicking the right mouse button opens the submenu with *Open Viewer* and *Properties*.

The *Open Viewer* menu item will bring up the Keyboard Layout Viewer. You may prefer to use this mode, if you are not familiar with the current keyboard layout.

Check mark *Always-on-top* box in the ParaWin ME Pro Properties window to display the Viewer on your screen.



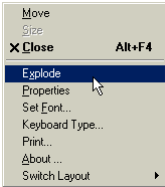


Click the right mouse button on the Keyboard Viewer caption bar to open its menu.

*Move*, *Size* and *Close* are three standard Windows options.

The lower part of the menu contains the following ParaWin ME options:

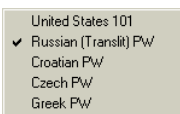
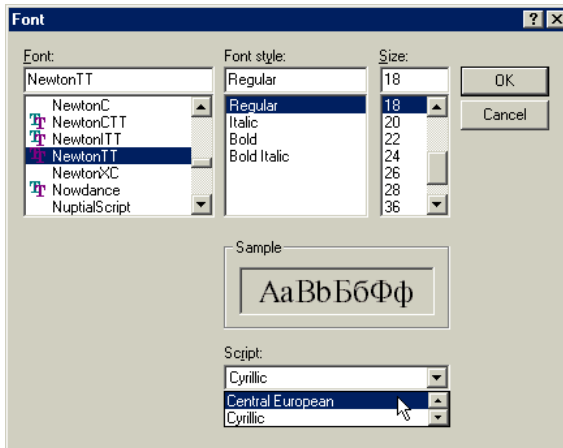
*Collapse* — switches Viewer to Movable Keyboard Indicator window.



In this mode the right mouse button brings up the same menu as in the Viewer mode, but *Collapse* option changes it into the *Explode* option that switches ParaWin ME Pro back into the full Viewer mode.

*Properties* — opens ParaWin ME Pro Control Panel.

*Set Font* — lets you select font for the Viewer window.



*Switch Layout* — switches between installed keyboard layouts.

### Entering Text in Multiple Languages

To enter text in multiple languages you will need to have the fonts supporting these languages, as well as the appropriate keyboard layouts allowing access to the proper characters.

#### Fonts

The smallest element of a writing system is a *Character*.  
In a computer system all characters are represented by numbers.

A system of characters governed by a general set of rules for creating text for one or several languages is called *Script* or *Character Set*.

The internal table containing an orderly organized character set and used by the operating system to relate the keys on the keyboard with the characters displayed on the screen and printed on the printer is defined as a *Code Page*.

A *Font* is a graphical representation of a character which is utilized to display text on screen, and to print it on paper or other visual media.

There are two types of fonts which could be used in Windows 95, 98 or ME operating environment - *Single-byte* and *Double-byte* fonts.

US and Pan European versions of Windows 95, 98 or ME were designed to work with 6 standard character sets (or scripts) organized in the following code pages:

Code Page 1250 — Central European (CE)

Code Page 1251 — Cyrillic (Cyr)

Code Page 1252 — Western

Code Page 1253 — Greek (Greek)

Code Page 1254 — Turkish (Tur)

Code Page 1257 — Baltic (Baltic)

The double-byte fonts in Windows 95, 98 or ME are represented in the application menus by fonts designated for a specific script.

Basic Windows TrueType fonts — *Arial*, *Courier New* and *Times New Roman* are double-byte fonts, designed to support all 6 scripts.

The set of fonts included in the ParaWin ME Pro package are also double-byte, multilingual fonts supporting all 6 scripts.

---

**Note:** *If you would like to use some other fonts, you need to make sure that scripts are supported by those fonts.*

---

## Keyboard Layouts

The ParaWin ME Pro package includes a comprehensive set of keyboard layouts for many languages.

Some languages are supported by several keyboard layouts. For example, for Russian language you may use *Russian* — standard layout for computers, *Russian (Translit)* — Russian phonetic QWERTY layout or *Russian (Typewriter)* — the standard layout for Russian typewriters.

If for some reason, none of the available layouts is satisfying your requirements, you can create your own, custom keyboard layout using *Keyboard Layout Editor*, described in Chapter 4.

---

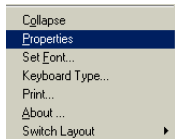
# Chapter 4

## Setting Up ParaWin™ ME Properties

To setup ParaWin ME Pro properties:



- Either point the cursor on the language/layout Indicator located on the Taskbar, click right mouse button and select Properties;



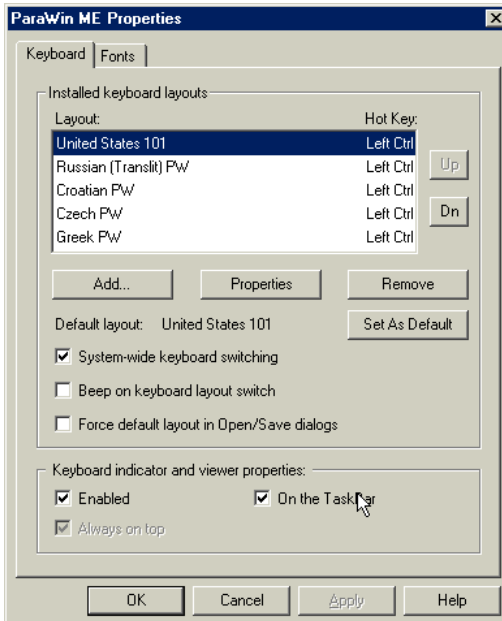
- Or click the right mouse button on the ParaWin ME Viewer caption bar and select Properties;



ParaWin

- Or double-click the ParaWin ME Pro icon in the Control Panel;
- Or access ParaWin ME Properties from Start\Programs\ParaWin ME\ParaWin ME Control Panel.

## Keyboard Layout Controls

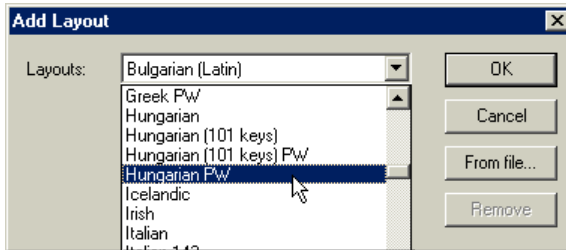


The list of the installed keyboard layouts is displayed in the ParaWin ME Pro Properties window.

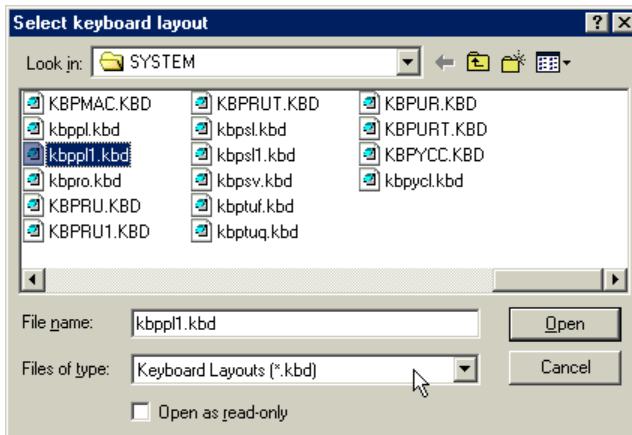
You may Add or Remove any of the layouts as well as make changes in their Properties.

## Adding Layout

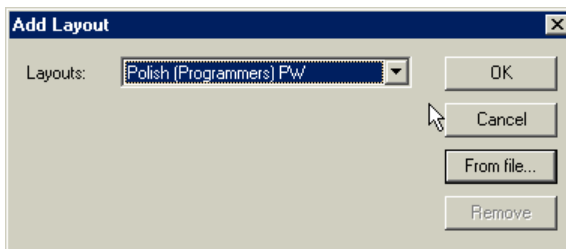
To add layout, click the Add button.



Select a layout from the list of available layouts. If the desired selection is not available, you can install it from a file. Click *From file...* button to install a new layout from a file with the extension *.KBD*.



Select a file containing the desired keyboard layout and click *OK*.

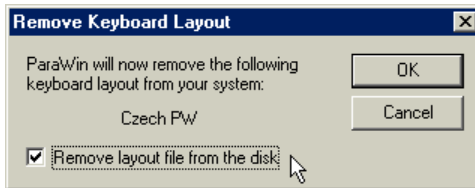


# Setting Up ParaWin™ ME Properties

## Removing Layout



Click the *Remove* button in the ParaWin ME Properties window.



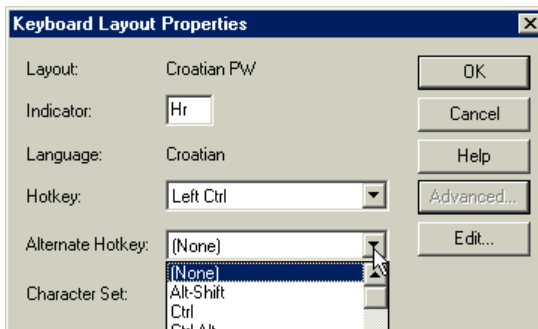
If you check the box “Remove layout file from the disk” the corresponding file will be removed from your system.

## Layout Properties

In the Keyboard Layout Properties window you can view and edit the layout properties.

In this window you can change the layout Indicator label and assign a hotkey combination to switch between languages/layouts.

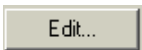
The *Advanced...* button opens the window used for setting up an alternate hotkey combination, and allows a direct access to a specific language/layout.



For example, you may want to group Western European languages in a set and then quickly activate an individual language/layout.

In this case, you will assign a Hotkey (e.g. *Left Ctrl*) for Western European set of languages and another Hotkey (e.g. *Right Ctrl*) for Slavic languages, and an Alternate Hotkey (*Shift*,

*Ctrl+Shift* etc.) to access a desired layout within a set. In this case, any desired language/layout will be directly accessible.



The *Edit* button will invoke the Keyboard Layout Editor.

## Changing the Code Page

The code page is a table of numbers that used by the operating system to relate the keys on the keyboard with the characters displayed on the screen .

Windows 95, 98 or ME Setup installs the standard Windows and MS-DOS code page pair for each specific language group.

The code page for Windows-based applications can be changed in Windows 95, 98 or ME. However, the code page for MS-DOS-based applications installed during the setup of the Windows 95, 98 or ME is unchangeable within Windows 95, 98 or ME.

ParaWin ME Pro was designed to overcome this limitation. It allows you to select an alternate code page used by MS-DOS-based applications. This functionality is very useful to you if your site uses an alternate character set other than the default MS-DOS level code page.

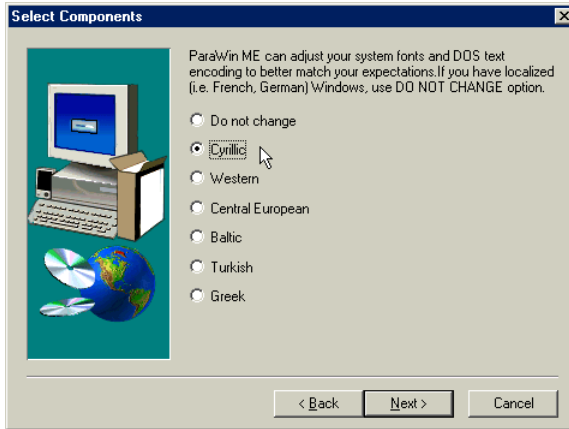
You know that you need an alternate code page if, after installing Windows 95, 98 or ME, your MS-DOS-based applications do not display characters properly, in other words, if the wrong characters appear as you type in the *MS-DOS prompt*.

When you install ParaWin ME Pro, Setup will prompt you to select one of the following standard character set pairs to be used in your system.

	Windows CP	MS-DOS CP
Cyrillic	1251	866
Western	1252	437
Central European	1250	852
Baltic	1257	775
Turkish	1254	857
Greek	1253	737

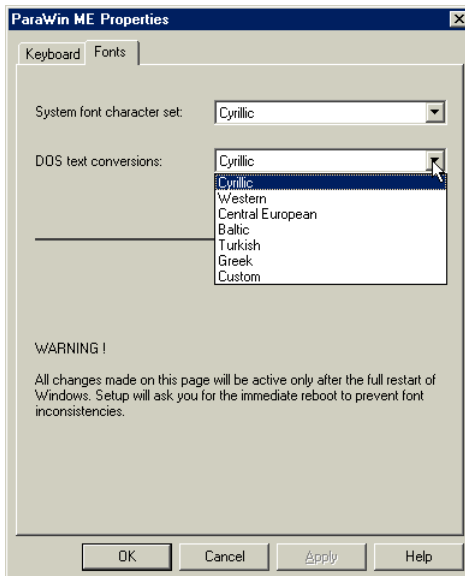
# Setting Up ParaWin™ ME Properties

During the installation procedure you should select one of the offered language settings.



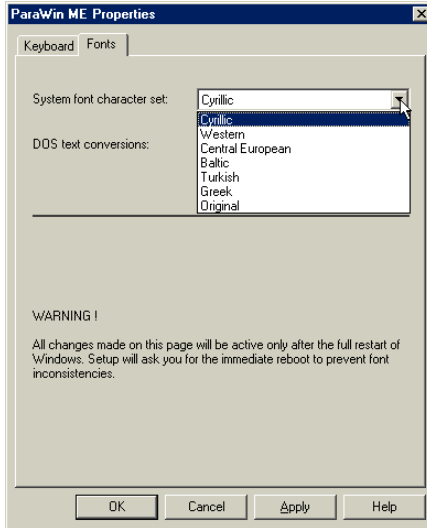
You may change language settings later by accessing the ParaWin ME Pro Properties:

- Open ParaWin ME Pro Properties window
- Click the Fonts Tab



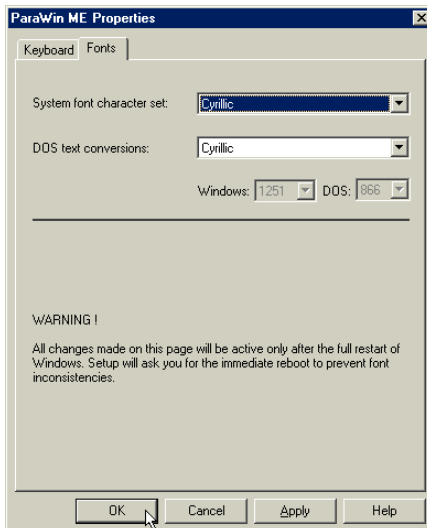
## Selecting Desired Pair of Code Pages

- From the drop-down menu, select the desired system font character set for Windows based applications .



This will automatically select a standard pair of code pages for both Windows and MS-DOS based applications.

- Click the *Apply* or *OK* button to finish setup.

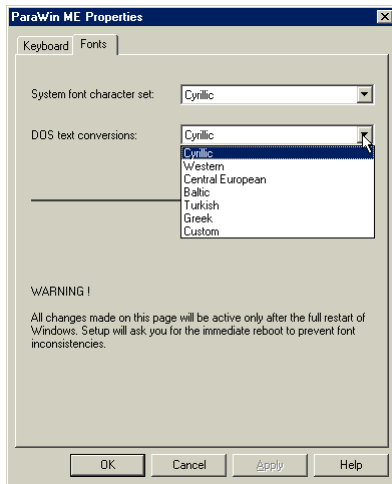


# Setting Up ParaWin™ ME Properties

## Changing the Code Page

To change the code page used for MS-DOS based applications:

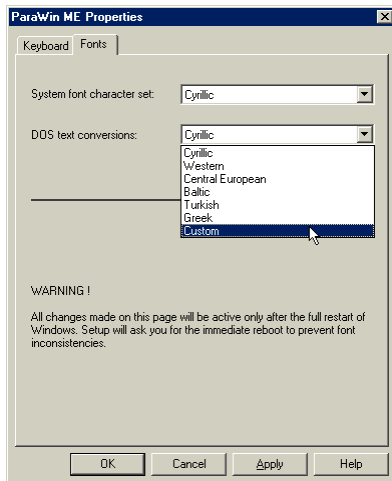
- Select MS-DOS text conversion character set from the drop-down list.
- Click the *Apply* or *OK* button to finish setup



## Changing the Code Page (Custom)

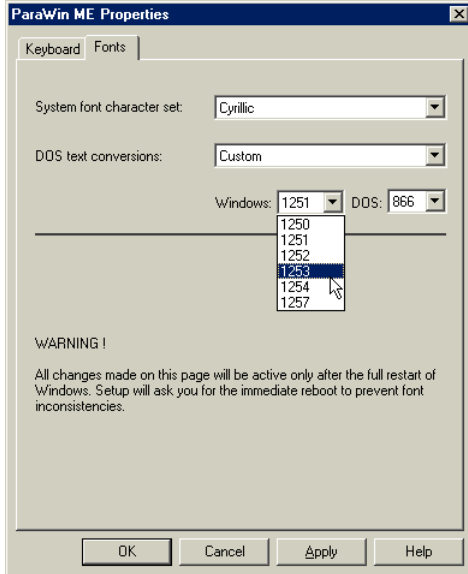
To change the code page used for MS-DOS based applications only, while retaining Windows-based system font, use the following procedure:

- Click the down-arrow and select Custom MS-DOS text conversion character set.



## Setting Up ParaWin™ ME Properties

The code page ID boxes will be enabled to accept a new ID entry .



Enter a desired code page ID into the DOS entry box.

---

**Note:** MAKE SURE THAT THE CODE PAGE NUMBER YOU ENTERED AND THE CODE PAGE NUMBER OF THE FILE STORED IN YOUR COMPUTER ARE IDENTICAL. OTHERWISE, IT MAY LEAD TO THE UNPREDICTABLE RESULTS INCLUDING YOUR SYSTEM LOCK UP.

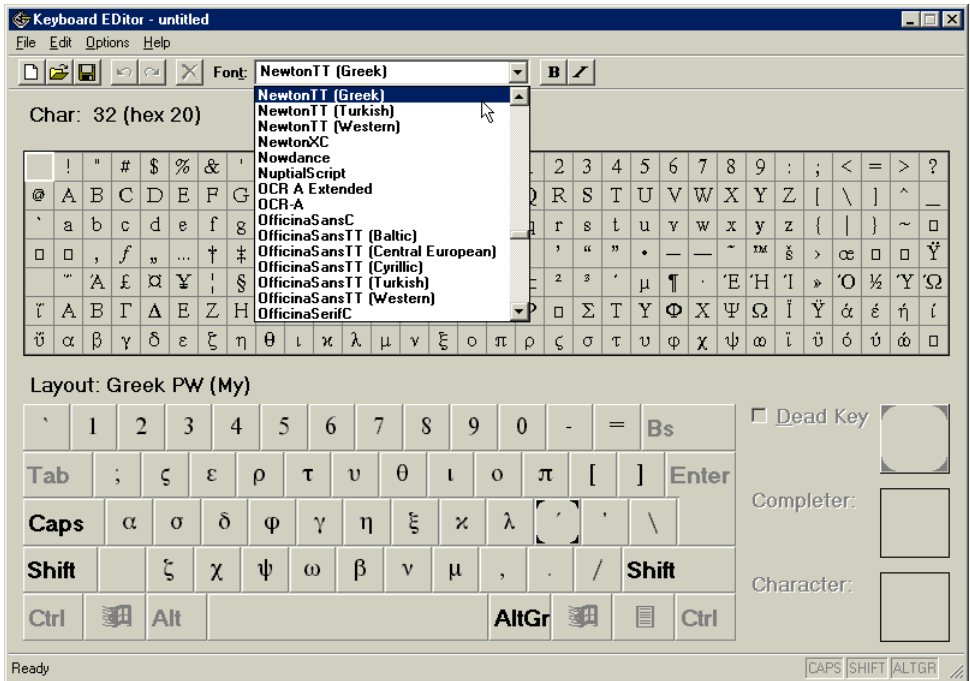
---

For example: some systems are setup to use the code page 850 (MS-DOS Latin 1) instead of 437 (MS-DOS United States).

- Click **OK**. ParaWin ME Pro will prompt you to restart your computer.

# Chapter 5

## Keyboard Layout Editor



The Keyboard Layout Editor allows you to do the following:

- Open a file containing Windows 95, 98 or ME keyboard layout data (\*.KBD) or any of the keyboard layouts currently installed in your system
- View keyboard layouts and select a font for them
- Change a layout, create or delete a dead key combinations, assign and reassign a dead-key completer
- Change a layout name
- Save changes made in a keyboard layout file and install it into your system



# Keyboard Layout Editor

---

## Creating or Loading Layout Template

New Ctrl+N

- You can create a new keyboard layout by choosing the *New* command from the *File* menu. In this case you will start with an empty template.

Open... Ctrl+O

- If you need to change the template, you may choose to load another one. To load a layout for editing, use the *Open* command from the *File* menu (*Ctrl-O*) and select the desired layout from the list of available layouts. If the layout you would like to edit is not installed in your system, but you know the name and the location of the keyboard data file (extension *.KBD*), you may load it by clicking the *From file...* button.

Load Active...

- If you want to load a currently active layout and view it using the Editor, you may use the *Load Active* command from the *File* menu.

## Saving and Activating Layout

Save Ctrl+S

- To save your newly created layout as a *.KBD* file, use *Save* or *Save As* commands from the *File* menu.

Activate...

- To activate a layout, use the *Activate* command from the *File* menu.

The layout name is shown above the keyboard chart, while the keyboard layout file name is displayed on the caption bar.

## Editing

To customize the keyboard layout, drag the characters from the character table located in the upper part of the Editor window, and drop them onto the keyboard keys of your choice, displayed in the lower part of the Editor window.

A different procedure could be used to assign a character to a key.

- Select a destination key by depressing it on your keyboard, or by clicking the image of this key on the keyboard chart. A selected key will appear pressed on the keyboard chart.
- Double-click the character to be placed, and it will drop onto a selected key.

Character:  
214 (hex D6)



The decimal (hexadecimal) value and the zoomed image of the character assigned to the key will appear in the right lower corner of the editing window.

AltGr

Caps

Shift

There are several keys on the keyboard chart that cannot be modified. These functional keys (“*Shift*”, “*Caps*”, “*AltGr*”) are used to change the keyboard layout mode.

## Customizing Application Window

Keyboard Type...

- If the keyboard chart does not resemble your physical keyboard, go to the *Options* menu, then select *Keyboard Type* and choose your actual type.

---

**Note:** Selection of a keyboard type from this list will not affect the layout itself - it only changes the way it is viewed.

---

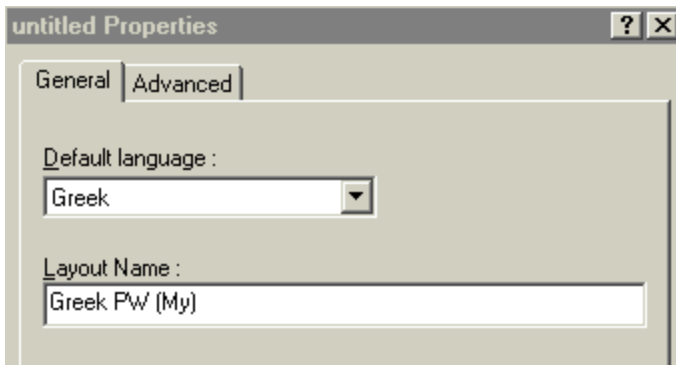
- To change fonts for the character table and key caps, use the *Fonts* drop-down list box.

## Changing Layout Properties

The main keyboard properties are: layout name and language.

Layout Properties...

To change these properties, go to *Layout Properties* in the *Options* menu and make the necessary changes.



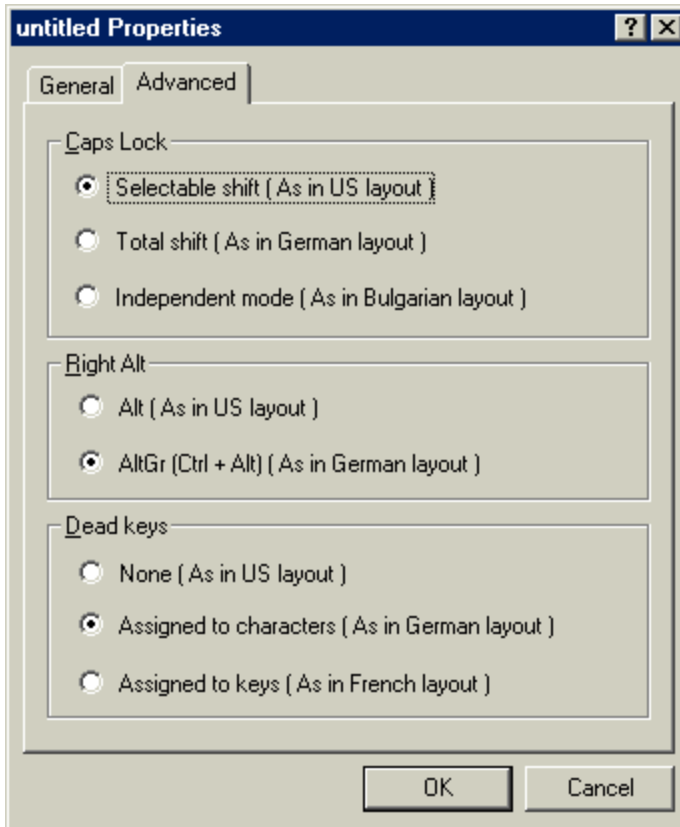
# Keyboard Layout Editor

---

## Advanced Operations

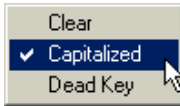
The *Advanced* tab in the *Layout Properties* opens a dialog box with additional features.

To get to this window, click on the *Options* menu in the *Keyboard Editor* window, then select the *Layout Properties*.



## Caps Lock

The Caps Lock key can be used in the following three ways:



- *Selectable Shift*. In this mode, the *Caps Lock* key switches some (usually alphabetic) keys into the *shifted* state, while the other keys remain in the *unshifted* state. The keys for which the state has been changed by the *Caps Lock* key have a special capitalization mark. This mark can be set *On* or *Off* either by clicking the right mouse button while pointing to the appropriate key or via *Edit* menu.
- *Total Shift*. In this mode the *Caps Lock* key operates as the *Shift* key with fixed position, locking all the keys into a shifted mode. To release *Caps Lock*, press either *left* or *right Shift* key. Pressing *Caps Lock* key for the second time will not release it.
- *Independent Mode*. This mode allows the use of the *Caps Lock* as third *Shift state*, which is independent from the other two states. Thus, for example, you can set letter “a” to unshifted state, “A” to shifted state and “@” to *Caps Lock* state using the same key.

## Right Alt



While in the US keyboard layout, the left and right *Alt* keys have the same functionality. In most European keyboard layouts the functionality of the right and left *Alt* keys differs. In this case, the right *Alt* key is called *AltGr*. *AltGr* key switches keyboard to a special state equal to *Ctrl+Alt* state used in the US keyboard layout. This mode is used for typing typographic marks, special symbols and rare letters.

## Dead Key

The key used in a sequential combination with the next pressed key to produce an accented character is called *Dead Key*.

---

**Note:** *Dead key by itself does not generate any character.*

---

For example:

To type “Â” using the French layout, you may press the key “^” (*Dead Key*) followed by the key “A” which is called a *Completer Key*.



# Keyboard Layout Editor

If you use a layout with the *Dead Keys* function enabled (e.g. French), in the *Advanced Option* window, any of the two possible dead key modes, then the lower part of the editor window will look a bit different.



*Dead Keys* on the keyboard chart are marked with black triangles in the corners. You can convert any key to a *Dead Key* by placing a check mark in the *Dead Key* box in the lower right section of the Keyboard Editor window.

When you select a predefined *Dead Key*, or check the *Dead Key* box, the zoom box next to it changes into a new *Dead Key*. To edit the selected *Dead Key*, you must click on it and then select another completer for this dead key from. The procedure for editing available completers for any dead key is exactly the same as for editing any other keyboard layout, i.e. either by dragging a character onto almost any key on the keyboard or by double-clicking a character designated to be used as an active key.

All assigned completers on the keyboard chart are shown in black; the keys which are not completers are dimmed. If the check box *Dead Key* is cleared, then all completers currently associated with the dead key are deleted and the *Dead Key* is converted back into a normal key.

There are two *Dead Key* modes that can be set up in the *Advanced Option* dialog window: “Assigned to characters” and “Assigned to keys”.

In the “Assigned to characters” mode the *Dead Key* function is correlated to a specific character.

For example, if you mark a key with the character “^” as *Dead Key* and later place this character onto another key, this newly assigned key automatically becomes a dead key.

In the “Assigned to keys” mode the *Dead Key* function is correlated to a specific key and not to the character. Hence, if you have several keys with the same character, only those of them which were specifically designated as “*Dead Keys*” will maintain the *Dead Key* functionality.

---

# Chapter 6

## Technical Information

### FAQ - ParaWin ME Pro

***1. I have Multilanguage support installed on my computer. Why do I need ParaWin?***

Multilanguage support is sufficient in case you want only to type and print out a document using standard keyboard layouts and limited number of fonts.

You need ParaWin to gain the ability to:

- Use most commonly used international keyboard layouts missing in Windows 95, 98 or ME
- Customize the existing keyboard layouts
- Use foreign proofing tools and foreign language software
- Use more fonts
- View a keyboard layout on screen
- Get more Hotkey choices to switch between languages
- Alphabetically sort a database

***2. I have the US version of Windows. Will ParaWin completely change my Windows interface into another language?***

No. ParaWin only installs special system information into your Windows system needed to support foreign languages. The Windows and applications interface will remain original. ParaWin will enable you to type, use proofing tools or other language applications in any of the supported languages.

***3. I have ParaWin installed on my computer. Where can I find the required characters on the keyboard?***

ParaWin provides a Keyboard Viewer, with which the chosen keyboard layout can be displayed on the screen at any time.

You also can obtain the Cyrillic Keytop Labels, the transparent stickers with Russian, Ukrainian and Serbian letters, and add the Cyrillic characters to the existing keyboard.

***4. I use Pan European version of Windows. Can I use ParaWin to get access to foreign languages?***

Yes. You can use any language that ParaWin supports provided you DON'T CHANGE System settings (System fonts character set) during the installation.

***5. I want to upgrade Windows 95 to Windows 98/ME. Do I have to upgrade ParaWin95 to ParaWin ME?***

Absolutely. ParaWin95 was developed in 1995 to provide the true multilingual support for Windows 95. Windows 98/ME implemented a new technology for handling fonts and languages. ParaWin ME was re-designed to support ALL Windows 95, 98 or ME version.

Never try to install ParaWin95 to Windows 98 or ME, as this may lead to undesirable results!

## Code Pages

### Windows Central European (CP=1250)

	0	1	2	3	4	5	6	7	8	9	A	B	C	D	E	F
20		!	”	#	\$	%	&	'	(	)	*	+	,	-	.	/
	32	33	34	35	36	37	38	39	40	41	42	43	44	45	46	47
30	0	1	2	3	4	5	6	7	8	9	:	;	<	=	>	?
	48	49	50	51	52	53	54	55	56	57	58	59	60	61	62	63
40	@	A	B	C	D	E	F	G	H	I	J	K	L	M	N	O
	64	65	66	67	68	69	70	71	72	73	74	75	76	77	78	79
50	P	Q	R	S	T	U	V	W	X	Y	Z	[	\	]	^	_
	80	81	82	83	84	85	86	87	88	89	90	91	92	93	94	95
60	`	a	b	c	d	e	f	g	h	i	j	k	l	m	n	o
	96	97	98	99	100	101	102	103	104	105	106	107	108	109	110	111
70	p	q	r	s	t	u	v	w	x	y	z	{		}	~	
	112	113	114	115	116	117	118	119	120	121	122	123	124	125	126	127
80			,	f	”	…	†	‡	^	%o	š	‹	ś	ť	ž	ž
	128	129	130	131	132	133	134	135	136	137	138	139	140	141	142	143
90		‘	’	“	”	•	—	—	~	™	š	›	ś	t'	ž	ž
	144	145	146	147	148	149	150	151	152	153	154	155	156	157	158	159
A0		˘	˘	ł	ø	Å	ı	ş	¨	©	ş	«	¬	-	®	Ž
	160	161	162	163	164	165	166	167	168	169	170	171	172	173	174	175
B0	°	±	¸	ı	´	µ	¶	·	¸	ą	ş	»	Ł	˜	ł	ż
	176	177	178	179	180	181	182	183	184	185	186	187	188	189	190	191
C0	Ř	Á	Â	Ã	Ä	Í	Č	Ç	Č	É	È	Ë	Ë	Í	Î	Ď
	192	193	194	195	196	197	198	199	200	201	202	203	204	205	206	207
D0	Đ	Ń	Ň	Ó	Ô	Õ	Ö	×	Ř	Û	Ú	Ů	Ů	Ý	Ť	ß
	208	209	210	211	212	213	214	215	216	217	218	219	220	221	222	223
E0	ř	á	â	ã	ä	í	č	ç	č	é	è	ë	ë	í	î	ď
	224	225	226	227	228	229	230	231	232	233	234	235	236	237	238	239
F0	đ	ń	ň	ó	ô	õ	ö	÷	ř	û	ú	ů	ů	ý	ť	·
	240	241	242	243	244	245	246	247	248	249	250	251	252	253	254	255

## Windows Cyrillic (CP=1251)

	0	1	2	3	4	5	6	7	8	9	A	B	C	D	E	F
20		!	”	#	\$	%	&	'	(	)	*	+	,	-	.	/
	32	33	34	35	36	37	38	39	40	41	42	43	44	45	46	47
30	0	1	2	3	4	5	6	7	8	9	:	;	<	=	>	?
	48	49	50	51	52	53	54	55	56	57	58	59	60	61	62	63
40	@	A	B	C	D	E	F	G	H	I	J	K	L	M	N	O
	64	65	66	67	68	69	70	71	72	73	74	75	76	77	78	79
50	P	Q	R	S	T	U	V	W	X	Y	Z	[	\	]	^	_
	80	81	82	83	84	85	86	87	88	89	90	91	92	93	94	95
60	`	a	b	c	d	e	f	g	h	i	j	k	l	m	n	o
	96	97	98	99	100	101	102	103	104	105	106	107	108	109	110	111
70	p	q	r	s	t	u	v	w	x	y	z	{		}	~	
	112	113	114	115	116	117	118	119	120	121	122	123	124	125	126	127
80	Ъ	Ґ	,	ґ	”	...	†	‡	'	%	‰	Ь	‹	Њ	Ќ	Љ
	128	129	130	131	132	133	134	135	136	137	138	139	140	141	142	143
90	ђ	‘	’	“	”	•	—	—	'	™	ь	›	њ	ќ	љ	џ
	144	145	146	147	148	149	150	151	152	153	154	155	156	157	158	159
A0		Ў	ў	Ј	Ѡ	Ґ	І	§	Ё	©	Є	«	¬	-	®	ї
	160	161	162	163	164	165	166	167	168	169	170	171	172	173	174	175
B0	°	±	І	і	г	μ	¶	·	ё	№	є	»	ј	ѕ	ѕ	ї
	176	177	178	179	180	181	182	183	184	185	186	187	188	189	190	191
C0	А	Б	В	Г	Д	Е	Ж	З	И	Й	К	Л	М	Н	О	П
	192	193	194	195	196	197	198	199	200	201	202	203	204	205	206	207
D0	Р	С	Т	У	Ф	Х	Ц	Ч	Ш	Щ	Ъ	Ы	Ь	Э	Ю	Я
	208	209	210	211	212	213	214	215	216	217	218	219	220	221	222	223
E0	а	б	в	г	д	е	ж	з	и	й	к	л	м	н	о	п
	224	225	226	227	228	229	230	231	232	233	234	235	236	237	238	239
F0	р	с	т	у	ф	х	ц	ч	ш	щ	ъ	ы	ь	э	ю	я
	240	241	242	243	244	245	246	247	248	249	250	251	252	253	254	255

Windows Western European (CP=1252)

	0	1	2	3	4	5	6	7	8	9	A	B	C	D	E	F
20		!	”	#	\$	%	&	'	(	)	*	+	,	-	.	/
	32	33	34	35	36	37	38	39	40	41	42	43	44	45	46	47
30	0	1	2	3	4	5	6	7	8	9	:	;	<	=	>	?
	48	49	50	51	52	53	54	55	56	57	58	59	60	61	62	63
40	@	A	B	C	D	E	F	G	H	I	J	K	L	M	N	O
	64	65	66	67	68	69	70	71	72	73	74	75	76	77	78	79
50	P	Q	R	S	T	U	V	W	X	Y	Z	[	\	]	^	_
	80	81	82	83	84	85	86	87	88	89	90	91	92	93	94	95
60	`	a	b	c	d	e	f	g	h	i	j	k	l	m	n	o
	96	97	98	99	100	101	102	103	104	105	106	107	108	109	110	111
70	p	q	r	s	t	u	v	w	x	y	z	{		}	~	
	112	113	114	115	116	117	118	119	120	121	122	123	124	125	126	127
80	•	•	,	f	”	…	†	‡	^	%o	š	‹	œ	•	•	•
	128	129	130	131	132	133	134	135	136	137	138	139	140	141	142	143
90	•	‘	’	“	”	•	—	—	~	™	š	›	œ	•	•	ÿ
	144	145	146	147	148	149	150	151	152	153	154	155	156	157	158	159
A0		i	ç	£	¤	¥	¦	§	¨	©	ª	«	¬	-	®	¯
	160	161	162	163	164	165	166	167	168	169	170	171	172	173	174	175
B0	°	±	²	³	´	µ	¶	·	¸	¹	º	»	¼	½	¾	¿
	176	177	178	179	180	181	182	183	184	185	186	187	188	189	190	191
C0	À	Á	Â	Ã	Ä	Å	Æ	Ç	È	É	Ê	Ë	Ì	Í	Î	Ï
	192	193	194	195	196	197	198	199	200	201	202	203	204	205	206	207
D0	Ð	Ñ	Ò	Ó	Ô	Õ	Ö	×	Ø	Ù	Ú	Û	Ü	Ý	Þ	ß
	208	209	210	211	212	213	214	215	216	217	218	219	220	221	222	223
E0	à	á	â	ã	ä	å	æ	ç	è	é	ê	ë	ì	í	î	ï
	224	225	226	227	228	229	230	231	232	233	234	235	236	237	238	239
F0	ð	ñ	ò	ó	ô	õ	ö	÷	ø	ù	ú	û	ü	ý	þ	ÿ
	240	241	242	243	244	245	246	247	248	249	250	251	252	253	254	255

## Windows Greek (CP=1253)

	0	1	2	3	4	5	6	7	8	9	A	B	C	D	E	F
20		!	”	#	\$	%	&	'	(	)	*	+	,	-	.	/
	32	33	34	35	36	37	38	39	40	41	42	43	44	45	46	47
30	0	1	2	3	4	5	6	7	8	9	:	;	<	=	>	?
	48	49	50	51	52	53	54	55	56	57	58	59	60	61	62	63
40	@	A	B	C	D	E	F	G	H	I	J	K	L	M	N	O
	64	65	66	67	68	69	70	71	72	73	74	75	76	77	78	79
50	P	Q	R	S	T	U	V	W	X	Y	Z	[	\	]	^	_
	80	81	82	83	84	85	86	87	88	89	90	91	92	93	94	95
60	`	a	b	c	d	e	f	g	h	i	j	k	l	m	n	o
	96	97	98	99	100	101	102	103	104	105	106	107	108	109	110	111
70	p	q	r	s	t	u	v	w	x	y	z	{		}	~	
	112	113	114	115	116	117	118	119	120	121	122	123	124	125	126	127
80		,	f	”	…	†	‡		‰		‘					
	128	129	130	131	132	133	134	135	136	137	138	139	140	141	142	143
90	‘	’	“	”	•	—	—		™		’					
	144	145	146	147	148	149	150	151	152	153	154	155	156	157	158	159
A0	”	À	£	α	Υ	ı	§		©		«	¬	-	®	—	
	160	161	162	163	164	165	166	167	168	169	170	171	172	173	174	175
B0	°	±	²	³	´	μ	¶	·	Έ	Η	Ί	»	Ό	½	Υ	Ω
	176	177	178	179	180	181	182	183	184	185	186	187	188	189	190	191
C0	ϊ	Α	Β	Γ	Δ	Ε	Ζ	Η	Θ	Ι	Κ	Λ	Μ	Ν	Ξ	Ο
	192	193	194	195	196	197	198	199	200	201	202	203	204	205	206	207
D0	Π	Ρ		Σ	Τ	Υ	Φ	Χ	Ψ	Ω	Ϊ	Ϋ	ά	έ	ή	ί
	208	209	210	211	212	213	214	215	216	217	218	219	220	221	222	223
E0	ϋ	α	β	γ	δ	ε	ζ	η	θ	ι	κ	λ	μ	ν	ξ	ο
	224	225	226	227	228	229	230	231	232	233	234	235	236	237	238	239
F0	π	ρ	ς	σ	τ	υ	φ	χ	ψ	ω	ϊ	ϋ	ό	ύ	ώ	
	240	241	242	243	244	245	246	247	248	249	250	251	252	253	254	255

Windows Turkish (CP=1254)

	0	1	2	3	4	5	6	7	8	9	À	Á	Â	Ã	Ä	Å	Æ	Ç	È	É	Ê	Ë	Ì	Í	Î	Ï
20		!	”	#	\$	%	&	'	(	)	*	+	,	-	.	/										
	32	33	34	35	36	37	38	39	40	41	42	43	44	45	46	47										
30	0	1	2	3	4	5	6	7	8	9	:	;	<	=	>	?										
	48	49	50	51	52	53	54	55	56	57	58	59	60	61	62	63										
40	@	A	B	C	D	E	F	G	H	I	J	K	L	M	N	O										
	64	65	66	67	68	69	70	71	72	73	74	75	76	77	78	79										
50	P	Q	R	S	T	U	V	W	X	Y	Z	[	\	]	^	_										
	80	81	82	83	84	85	86	87	88	89	90	91	92	93	94	95										
60	`	a	b	c	d	e	f	g	h	i	j	k	l	m	n	o										
	96	97	98	99	100	101	102	103	104	105	106	107	108	109	110	111										
70	p	q	r	s	t	u	v	w	x	y	z	{		}	~											
	112	113	114	115	116	117	118	119	120	121	122	123	124	125	126	127										
80			,	f	”	…	†	‡	^	%	š	‹	œ													
	128	129	130	131	132	133	134	135	136	137	138	139	140	141	142	143										
90	‘	’	“	”	•	—	—	~	™	š	›	œ			ÿ											
	144	145	146	147	148	149	150	151	152	153	154	155	156	157	158	159										
A0		ı	ç	£	¤	¥	ı	§	¨	©	ª	«	¬	®	¯											
	160	161	162	163	164	165	166	167	168	169	170	171	172	173	174	175										
B0	°	±	²	³	´	µ	¶	·	¸	¹	º	»	¼	½	¾	¿										
	176	177	178	179	180	181	182	183	184	185	186	187	188	189	190	191										
C0	À	Á	Â	Ã	Ä	Å	Æ	Ç	È	É	Ê	Ë	Ì	Í	Î	Ï										
	192	193	194	195	196	197	198	199	200	201	202	203	204	205	206	207										
D0	Ğ	Ñ	Ò	Ó	Ô	Õ	Ö	×	ı	Ù	Ú	Û	Ü	İ	Ş	ß										
	208	209	210	211	212	213	214	215	216	217	218	219	220	221	222	223										
E0	à	á	â	ã	ä	å	æ	ç	è	é	ê	ë	ì	í	î	ï										
	224	225	226	227	228	229	230	231	232	233	234	235	236	237	238	239										
F0	ğ	ñ	ò	ó	ô	õ	ö	÷	ı	ù	ú	û	ü	ı	ş	ÿ										
	240	241	242	243	244	245	246	247	248	249	250	251	252	253	254	255										

## Windows Baltic (CP=1257)

	0	1	2	3	4	5	6	7	8	9	A	B	C	D	E	F
20		!	”	#	\$	%	&	'	(	)	*	+	,	-	.	/
	32	33	34	35	36	37	38	39	40	41	42	43	44	45	46	47
30	0	1	2	3	4	5	6	7	8	9	:	;	<	=	>	?
	48	49	50	51	52	53	54	55	56	57	58	59	60	61	62	63
40	@	A	B	C	D	E	F	G	H	I	J	K	L	M	N	O
	64	65	66	67	68	69	70	71	72	73	74	75	76	77	78	79
50	P	Q	R	S	T	U	V	W	X	Y	Z	[	\	]	^	_
	80	81	82	83	84	85	86	87	88	89	90	91	92	93	94	95
60	`	a	b	c	d	e	f	g	h	i	j	k	l	m	n	o
	96	97	98	99	100	101	102	103	104	105	106	107	108	109	110	111
70	p	q	r	s	t	u	v	w	x	y	z	{		}	~	
	112	113	114	115	116	117	118	119	120	121	122	123	124	125	126	127
80			,	”	...	†	‡		‰		<					
	128	129	130	131	132	133	134	135	136	137	138	139	140	141	142	143
90		‘	’	“	”	•	—	—		™		}				
	144	145	146	147	148	149	150	151	152	153	154	155	156	157	158	159
A0			ç	£	¤		¦	§	ø	©	®	«	¬	-	®	Æ
	160	161	162	163	164	165	166	167	168	169	170	171	172	173	174	175
B0	°	±	²	³		µ	¶	·	ø	¹	²	»	¼	½	¾	æ
	176	177	178	179	180	181	182	183	184	185	186	187	188	189	190	191
C0	Ą	Į	Ā	Ć	Ä	Å	Ę	Ē	Č	É	Ž	È	Ğ	Ķ	Ī	Ļ
	192	193	194	195	196	197	198	199	200	201	202	203	204	205	206	207
D0	Š	Ń	Ņ	Ó	Ō	Õ	Ö	×	Ų	Ł	Ś	Ū	Ū	Ž	Ž	ß
	208	209	210	211	212	213	214	215	216	217	218	219	220	221	222	223
E0	ą	į	ā	ć	ä	å	ę	ē	č	é	ž	è	ğ	ķ	ī	ļ
	224	225	226	227	228	229	230	231	232	233	234	235	236	237	238	239
F0	š	ń	ņ	ó	ō	õ	ö	÷	ų	ł	ś	ū	ū	ž	ž	
	240	241	242	243	244	245	246	247	248	249	250	251	252	253	254	255

Font Set included in ParaWin ME Pro Package

**CourierTT Baltic**

ĀāĂăĄąĔēĖėĢģĶķĻļŌōÖöÛüŲųČčŠšŽžŪū

**NewtonTT Baltic**

ĀāĂăĄąĔēĖėĢģĶķĻļŌōÖöÛüŲųČčŠšŽžŪū

**PragmaticaTTBaltic**

ĀāĂăĄąĔēĖėĢģĶķĻļŌōÖöÛüŲųČčŠšŽžŪū

**CourierTT Cyrillic**

АаБбВвГгЖжЂђЃѓЅѕЇїЈјЉљЊњЏџвѓдћжѵЄєІіЈј

**NewtonTT Cyrillic**

АаБбВвГгЖжЂђЃѓЅѕЇїЈјЉљЊњЏџвѓдћжѵЄєІіЈј

**PragmaticaTT Cyrillic**

АаБбВвГгЖжЂђЃѓЅѕЇїЈјЉљЊњЏџвѓдћжѵЄєІіЈј

**CourierTT Central European**

ÁáĂăÇçČčĚěÍíÎîĐđŇňÓóŘřŮůÝýŤťŘř

**NewtonTT Central European**

ÁáĂăÇçČčĚěÍíÎîĐđŇňÓóŘřŮůÝýŤťŘř

**PragmaticaTTCentralEuropean**

ÁáĂăĂăĆćÇçČčĚěÍíÎîĐđŇňÓóŘřŮůÝýŤťŘř

**CourierTT Greek**

ΑαΒβΓγΔδΕεΖζΗηΘθΙιΚκΛλΜμΝνΞξΟοΠπ

**NewtonTT Greek**

ΑαΒβΓγΔδΕεΖζΗηΘθΙιΚκΛλΜμΝνΞξΟοΠπ

**PragmaticaTT Greek**

ΑαΒβΓγΔδΕεΖζΗηΘθΙιΚκΛλΜμΝνΞξΟοΠπ

**CourierTT Turkish**

ÂâĂăÇç ÎîÖö ÛûÜüƒ£¥ÆæŒœ¥£ƒ

**NewtonTT Turkish**

ÂâĂăÇçĞğİıÎîÖöŞşÛûÜüƒ£¥ÆæŒœ¥£ƒ

**PragmaticaTT Turkish**

ÂâĂăÇçĞğİıÎîÖöŞşÛûÜüƒ£¥ÆæŒœ¥£ƒ

**CourierTT Western European**

ÀàÁáĂăÆæÇçÈèÉéÍíÎîĐđÑñÒòƐƐßÿıœ¥£ƒ

**NewtonTT Western European**

ÀàÁáĂăÆæÇçÈèÉéÍíÎîĐđÑñÒòƐƐßÿıœ¥£ƒ

**PragmaticaTT Western European**

ÀàÁáĂăÆæÇçÈèÉéÍíÎîĐđÑñÒòƐƐßÿıœ¥£ƒ