

(URW)++

CONVERTEX

TEXT CONVERTER

FROM PC TO MAC

FROM MAC TO PC

INSTALLATION PLATFORM: PC/MAC

BEDIENERHANDBUCH

USER MANUAL

URW++ CONVERTEX User Manual

TABLE OF CONTENTS

Introduction	E-2
Installation	E-3
Function Description	E-4
Data Flow	E-6
Conversion Steps	E-7

INTRODUCTION:

The utility **URW++ Convertex** is a conversion program which converts a Rich-Text-Format (RTF) file or a simple text (TXT) file from PC-encoding to the correct character encoding on the MAC and/or vice versa. Usually this conversion is done automatically by the application programs themselves and supported as a »save as« option. Unfortunately this works for most programs only in the case that Latin fonts with the standard Western codepage (Latin 1) are used.

URW++ Convertex is able to convert an RTF file or a TXT file which has been produced on one platform with an arbitrary codepage (for example West European character set, East European character set or Greek character set) into an RTF file or a text file which can be used on the other platform with the font belonging to the same codepage.

When using RTF files, formatting information is conserved. Simple text files do not allow for the transference of formatting information in this way, but this is very often a small tradeoff compared to re-writing the entire document.

Please note that the program treats all files as simple text files unless an RTF-specific string is found in the file header.

INSTALLATION:

On Mac

The program works on Mac OS.

- Insert the CD-ROM into the CD-ROM drive and doubleclick on the »Install URW++ Convertex« icon.
The folder »URW++ Convertex 1.2« will then be installed on your harddisk.
- Copy the folder »Fonts« from the CD to your harddisk. To install these fonts, use the standard font installation procedure (ATM or Suitcase or Systemfolder: Fonts).
- Doubleclick on the program file »convertex.exe« in the folder » URW++ Convertex 1.2« to start the conversion program.

On PC

The program works on Windows 95/98/2000/XP and NT 4.0. The installation follows the standard Windows procedure.

- Insert the CD-ROM into the CD-ROM drive and doubleclick on »setup.exe« in the folder »INSTALL_CONVERTEX«. The installation will guide you through the necessary steps.
- It is advisable to create two additional folders named »PC_files« and »Mac_files« as the input and destination directories, in the folder where the file »convertex.exe« is contained. These folders make it easier to distinguish between the input and output files of the same name.

FUNCTION DESCRIPTION:

The program allows for forward and backward conversion between RTF files or simple text files for MAC and PC. The current version of **URW++ Convertex** is capable of searching the original RTF file for certain parameters and independently determining which codepage(s) to use. This is especially helpful when a document contains more than one codepage. Therefore, the default setting for conversions is: »Automatic (allow dynamic change of codepages)«. It can occur, e.g. when these parameters are missing, that **URW++ Convertex** chooses an incorrect codepage. In this case one needs to re-work the document using **URW++ Convertex**, but this time one must choose a specific character set and inform the program as to exactly which codepage has been used in the document to be converted. **Please note that using this setting will result in the entire document being converted on the basis of the one single selected codepage.**

The conversion has the following features:

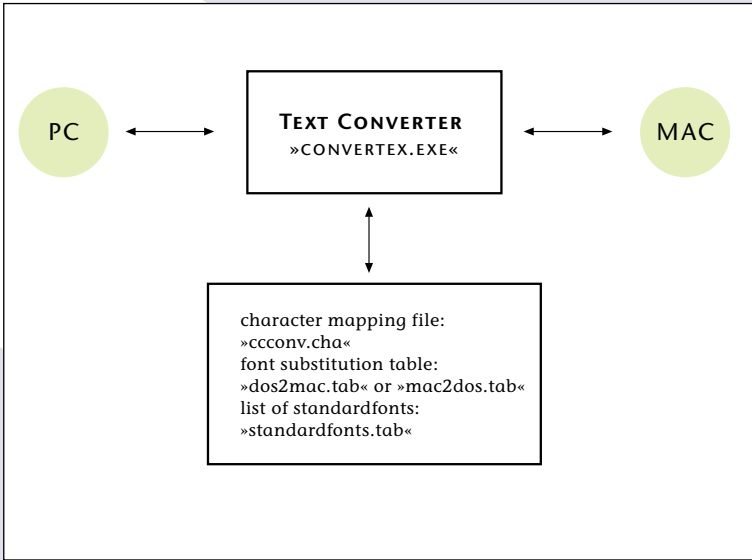
- The character encoding will be translated into the respective encoding on the target platform.
- The font names used in the source document will be substituted by different font names which should be accessible on the target platform.
- The user can customize the font substitution table by storing individual font names. **URW++ Convertex** is delivered with font substitution tables listing all codepage variations in the **Convertex Font Library** (see page E-11).

- Characters which do not exist in the character set of the target platform will be translated by forcing a temporary font change to a codepage which contains the missing glyph. In the rare case that none of the codepages on the target platform supports a specific character, the code of this character remains unchanged. If this happens a completely wrong sign will appear in the translated text and the program inserts the string »<UFO:>« or »<UFO1:>« preceding the wrong glyph in order to allow easy correction. After importing the converted RTF file into any text processing program on the target platform, the user should use the »search« function to scan the document for any occurrences of the string »UFO«.

- The codepages supported presently are:
 - West European character set,
 - East European character set,
 - Cyrillic character set,
 - Greek character set,
 - Baltic character set,
 - Romanian character set,
 - Turkish character set,
 - Hebrew character set,
 - Kazakh character set,
 - Uzbek character set,
 - Symbols.

- The converter can be extended to other codepages and languages.

DATA FLOW:



Additional Information on character encodings can be found at:

1. Unicode (www.unicode.org),
2. Microsoft Typography Homepage (www.microsoft.com),
3. Apple Font Technology (fonts.apple.com).

CONVERSION STEPS:

1. Conversion of single/multiple files:
 - Select an input directory, left for PC-files, right for Mac-files. Depending on the desired conversion, select all files or individual ones.
 - Select a destination directory.
 - Select the conversion mode (allow automatic conversion or manually set to a specific codepage).
 - Select the appropriate direction for the conversion (PC >>>> MAC or PC <<<< MAC).
 - Since the files are not renamed during conversion, make sure that the input and the destination directories are different.
 - When converting RTF files, use the font substitution dialog to confirm or to change the font name substitution table.

USER INTERFACE:



In the example above one single document »productinfo.rtf« is to be converted from PC format into MAC format using the Automatic mode.



In this example three documents are to be converted from PC format into MAC format using the Automatic mode.



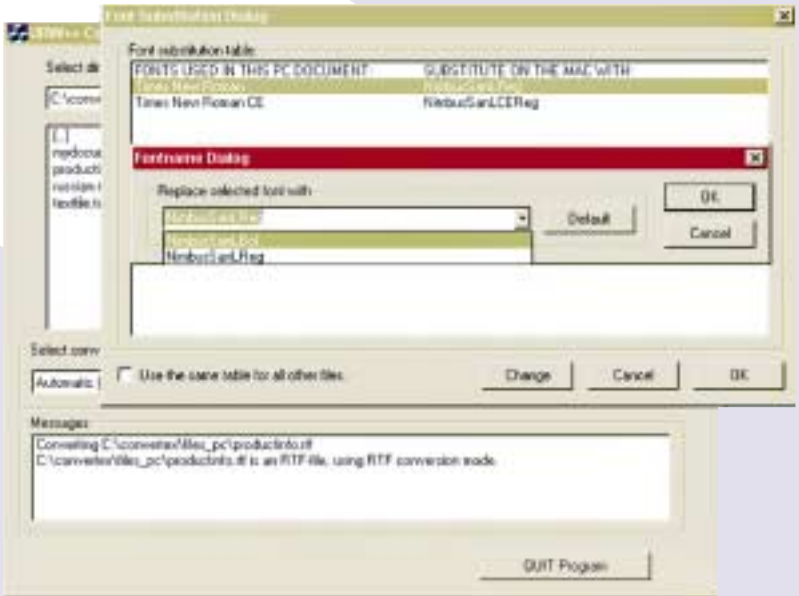
If the automatic recognition of the correct codepage should fail due to missing parameters in the RTF file, the program can be forced to adopt a user-defined codepage by selecting the desired character set from the list box. For most RTF files this should not be necessary.

We recommend that RTF files always be converted in Automatic mode, unless the result in this mode is totally unsatisfactory. Using a single character set only for the conversion mode will result in the complete document being converted for that one particular codepage. Should the document actually contain more than one codepage, the text passages containing the second or third codepage fonts will not be shown correctly since they will have been converted for use with the first codepage font.

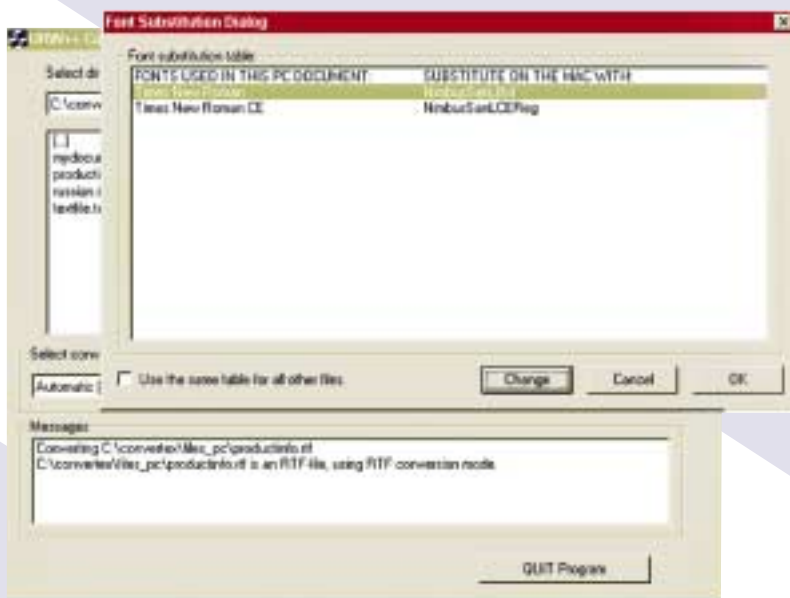
However, when translating non-RTF files (i.e. TXT-files), one single character set **must** be specified, as simple text files do not contain any information about the codepage used during creation. An attempt to convert a non-RTF file in Automatic mode will result in an error message.



After clicking the start button »>>>>« or »<<<<<« the program analyzes the RTF file and displays the font substitution dialog. It informs the user which fonts will be used on the target platform. The user can change any of the suggested substitutions by selecting the font name with the mouse and by clicking on »Change«. This will display a dialog which allows the input of a user-defined font name.



In this example the user has decided to alter the default substitution for the font »Times New Roman«. Clicking the arrow next to the font substitution box pulls down a listing of all fonts in the Convertex Font Library with the identical codepage (e.g. East European font versions when an East European codepage is to be substituted, Cyrillic font versions when a Cyrillic codepage is to be substituted, etc.). The new font name can be either taken from the listbox or be input manually. In this example the font name on the target platform will now be set to »NimbusSanLBoI« instead of »NimbusSanLReg«. After clicking the OK button the new substitution rule is shown in the dialog box as can be seen on the following page:



After clicking the OK button in the font substitution dialog, the conversion starts. The program will display the following final screen after the conversion is done:



The Mac RTF-file can now be imported on the Mac. If an application is to be used which does not include an RTF-filter, we suggest using the program *Word for Macintosh* to convert the RTF-file into a DOC-file, for which an import filter is usually a part of the normal application package.

Character Sets for PC

Character set: Baltic

Supported Language:

English, Estonian, Finnish, German, Latvian, Lithuanian, Polish, Slovene, Swedish

Windows Baltic (PT 104, 1257)

	0	1	2	3	4	5	6	7	8	9	A	B	C	D	E	F
20		!	"	#	\$	%	&	'	()	*	+	,	-	.	/
	32	33	34	35	36	37	38	39	40	41	42	43	44	45	46	47
30	0	1	2	3	4	5	6	7	8	9	:	;	<	=	>	?
	48	49	50	51	52	53	54	55	56	57	58	59	60	61	62	63
40	@	A	B	C	D	E	F	G	H	I	J	K	L	M	N	O
	64	65	66	67	68	69	70	71	72	73	74	75	76	77	78	79
50	P	Q	R	S	T	U	V	W	X	Y	Z	[\]	^	_
	80	81	82	83	84	85	86	87	88	89	90	91	92	93	94	95
60	`	a	b	c	d	e	f	g	h	i	j	k	l	m	n	o
	96	97	98	99	100	101	102	103	104	105	106	107	108	109	110	111
70	p	q	r	s	t	u	v	w	x	y	z	{		}	~	□
	112	113	114	115	116	117	118	119	120	121	122	123	124	125	126	127
80	€	□	,	□	"	...	†	‡	□	‰	□	<	□	□	□	□
	128	129	130	131	132	133	134	135	136	137	138	139	140	141	142	143
90	□	‘	’	“	”	•	—	—	□	™	□	>	□	□	□	□
	144	145	146	147	148	149	150	151	152	153	154	155	156	157	158	159
A0	˘	˘	£	¤	□	ı	§	¨	©	®	«	¬	-	®	Æ	
	160	161	162	163	164	165	166	167	168	169	170	171	172	173	174	175
B0	°	±	³	´	µ	¶	·	¸	¹	º	»	¼	½	¾	æ	
	176	177	178	179	180	181	182	183	184	185	186	187	188	189	190	191
C0	À	Á	Â	Ã	Ä	Å	Ē	Ē	Ĉ	Ĉ	Ċ	Ċ	Ď	Ď	Ĭ	Ĭ
	192	193	194	195	196	197	198	199	200	201	202	203	204	205	206	207
D0	Š	Ń	Ń	Ō	Ō	Ō	×	U	Ł	Ś	Ū	Ū	Ž	Ž	ß	
	208	209	210	211	212	213	214	215	216	217	218	219	220	221	222	223
E0	ą	ı	ā	ć	ä	å	e	ē	č	é	ž	ė	g	k	ı	l
	224	225	226	227	228	229	230	231	232	233	234	235	236	237	238	239
F0	š	ń	ņ	ó	ō	õ	÷	u	ł	ś	ū	ū	ž	ž	.	
	240	241	242	243	244	245	246	247	248	249	250	251	252	253	254	255

Character Sets for PC

Character set: Central European

Supported Language:

Albanian, Croatian, Czech, English, Finnish, German, Hungarian, Irish, Moldavian, Polish, Romanian, Slovak, Slovene, Sorbian

Windows Central European (PT 102, 1250)

	0	1	2	3	4	5	6	7	8	9	A	B	C	D	E	F
20		!	"	#	\$	%	&	'	()	*	+	,	-	.	/
	32	33	34	35	36	37	38	39	40	41	42	43	44	45	46	47
30	0	1	2	3	4	5	6	7	8	9	:	;	<	=	>	?
	48	49	50	51	52	53	54	55	56	57	58	59	60	61	62	63
40	@	A	B	C	D	E	F	G	H	I	J	K	L	M	N	O
	64	65	66	67	68	69	70	71	72	73	74	75	76	77	78	79
50	P	Q	R	S	T	U	V	W	X	Y	Z	[\]	^	_
	80	81	82	83	84	85	86	87	88	89	90	91	92	93	94	95
60	`	a	b	c	d	e	f	g	h	i	j	k	l	m	n	o
	96	97	98	99	100	101	102	103	104	105	106	107	108	109	110	111
70	p	q	r	s	t	u	v	w	x	y	z	{		}	~	□
	112	113	114	115	116	117	118	119	120	121	122	123	124	125	126	127
80	€	□	,	f	"	...	†	‡	^	‰	Š	<	Š	Ť	Ž	Ž
	128	129	130	131	132	133	134	135	136	137	138	139	140	141	142	143
90	□	‘	’	“	”	•	—	—	~	™	š	>	ś	ť	ž	ž
	144	145	146	147	148	149	150	151	152	153	154	155	156	157	158	159
A0		˘	ˇ	Ł	◻	À	ı	§	¨	©	Š	«	¬	-	®	Ž
	160	161	162	163	164	165	166	167	168	169	170	171	172	173	174	175
B0	°	±	ˆ	ł	’	µ	¶	·		à	á	»	Ł	”	ł	ž
	176	177	178	179	180	181	182	183	184	185	186	187	188	189	190	191
C0	Ř	Á	Ā	Ā	Ā	Ā	Ā	Ā	Ā	Ā	Ā	Ā	Ā	Ā	Ā	Ā
	192	193	194	195	196	197	198	199	200	201	202	203	204	205	206	207
D0	Đ	Ń	Ń	Ó	Ó	Ó	Ó	×	Ř	Ů	Ů	Ů	Ů	Ý	Ť	ß
	208	209	210	211	212	213	214	215	216	217	218	219	220	221	222	223
E0	í	á	â	ă	ä	ı	ć	ç	č	é	e	ë	ě	í	î	đ
	224	225	226	227	228	229	230	231	232	233	234	235	236	237	238	239
F0	đ	ń	ň	ó	ô	õ	ö	÷	ř	ů	ú	ű	ü	ý	ț	·
	240	241	242	243	244	245	246	247	248	249	250	251	252	253	254	255

Character Sets for PC

Character set: Cyrillic

Supported Language:

Abasinian, Adygeish, Avarish, Balkarian, Belorussian, Bulgarian, Chechenish, Darginish, English, Ingushian, Kabardino-Cherkesian, Kumykish, Lakish, Lesginian, Macedonian, Mordovsko-Ersatian, Mordovsko-Mokshanian, Nanaish, NenishNivkh, Nogaian, Russian, Selkup, Serbian, Tabasaranish, Ukrainian

Windows Cyrillic Standard (PT 151 (1251))

	0	1	2	3	4	5	6	7	8	9	A	B	C	D	E	F
20		!	"	#	\$	%	&	'	()	*	+	,	-	.	/
30	0	1	2	3	4	5	6	7	8	9	:	;	<	=	>	?
40	@	A	B	C	D	E	F	G	H	I	J	K	L	M	N	O
50	P	Q	R	S	T	U	V	W	X	Y	Z	[\]	^	_
60	`	a	b	c	d	e	f	g	h	i	j	k	l	m	n	o
70	p	q	r	s	t	u	v	w	x	y	z	{		}	~	□
80	€	Г	,	í	"	...	†	‡	€	‰	Љ	<	Њ	Ќ	Ѕ	Ц
90	ђ	‘	’	“	”	•	—	—	□	™	љ	>	њ	ќ	ѕ	ц
A0		Ÿ	ÿ	Ј	Љ	Г	‘	§	Ё	©	€	<	—	-	®	İ
B0	°	±	І	і	г	и	џ	·	ë	№	€	»	ј	ѕ	ѕ	ї
C0	А	Б	В	Г	Д	Е	Ж	З	И	Й	К	Л	М	Н	О	П
D0	Р	С	Т	У	Ф	Х	Ц	Ч	Ш	Щ	Ъ	Ы	Ь	Э	Ю	Я
E0	а	б	в	г	д	е	ж	з	и	й	к	л	м	н	о	п
F0	р	с	т	у	ф	х	ц	ч	ш	щ	ъ	ы	ь	э	ю	я

Character Sets for PC

Character set: Greek

Supported Language:

English, Greek

Windows Greek Monotonic (PT 121, 1253)

	0	1	2	3	4	5	6	7	8	9	A	B	C	D	E	F
20		!	"	#	\$	%	&	'	()	*	+	,	-	.	/
	32	33	34	35	36	37	38	39	40	41	42	43	44	45	46	47
30	0	1	2	3	4	5	6	7	8	9	:	;	<	=	>	?
	48	49	50	51	52	53	54	55	56	57	58	59	60	61	62	63
40	@	A	B	C	D	E	F	G	H	I	J	K	L	M	N	O
	64	65	66	67	68	69	70	71	72	73	74	75	76	77	78	79
50	P	Q	R	S	T	U	V	W	X	Y	Z	[\]	^	_
	80	81	82	83	84	85	86	87	88	89	90	91	92	93	94	95
60	`	a	b	c	d	e	f	g	h	i	j	k	l	m	n	o
	96	97	98	99	100	101	102	103	104	105	106	107	108	109	110	111
70	p	q	r	s	t	u	v	w	x	y	z	{		}	~	
	112	113	114	115	116	117	118	119	120	121	122	123	124	125	126	127
80	€		,	f	"	...	†	‡		‰		<				
	128	129	130	131	132	133	134	135	136	137	138	139	140	141	142	143
90		‘	’	“	”	•	—	—		™		>				
	144	145	146	147	148	149	150	151	152	153	154	155	156	157	158	159
A0		ˆ	ˆ	ˆ	ˆ	ˆ	ˆ	ˆ	ˆ	ˆ	ˆ	ˆ	ˆ	ˆ	ˆ	ˆ
	160	161	162	163	164	165	166	167	168	169	170	171	172	173	174	175
B0	°	±	²	³	´	μ	¶	·	Έ	Η	Ι	»	Ό	½	Υ	Ω
	176	177	178	179	180	181	182	183	184	185	186	187	188	189	190	191
C0	ϊ	Α	Β	Γ	Δ	Ε	Ζ	Η	Θ	Ι	Κ	Λ	Μ	Ν	Ξ	Ο
	192	193	194	195	196	197	198	199	200	201	202	203	204	205	206	207
D0	Π	Ρ		Σ	Τ	Υ	Φ	Χ	Ψ	Ω	Ϊ	Ϋ	ά	έ	ή	ί
	208	209	210	211	212	213	214	215	216	217	218	219	220	221	222	223
E0	ϋ	α	β	γ	δ	ε	ξ	η	θ	ι	κ	λ		ν	ξ	ο
	224	225	226	227	228	229	230	231	232	233	234	235	236	237	238	239
F0	π	ρ	ς	σ	τ	υ	φ	χ	ψ	ω	ϊ	ϋ	ό	ύ	ώ	
	240	241	242	243	244	245	246	247	248	249	250	251	252	253	254	255

Character Sets for PC

Character set: Hebrew

Supported Language:

English, Hebrew

Windows Hebrew (PT 131, 1255)

	0	1	2	3	4	5	6	7	8	9	A	B	C	D	E	F
20		!	"	#	\$	%	&	'	()	*	+	,	-	.	/
	32	33	34	35	36	37	38	39	40	41	42	43	44	45	46	47
30	0	1	2	3	4	5	6	7	8	9	:	;	<	=	>	?
	48	49	50	51	52	53	54	55	56	57	58	59	60	61	62	63
40	@	A	B	C	D	E	F	G	H	I	J	K	L	M	N	O
	64	65	66	67	68	69	70	71	72	73	74	75	76	77	78	79
50	P	Q	R	S	T	U	V	W	X	Y	Z	[\]	^	_
	80	81	82	83	84	85	86	87	88	89	90	91	92	93	94	95
60	`	a	b	c	d	e	f	g	h	i	j	k	l	m	n	o
	96	97	98	99	100	101	102	103	104	105	106	107	108	109	110	111
70	p	q	r	s	t	u	v	w	x	y	z	{		}	~	□
	112	113	114	115	116	117	118	119	120	121	122	123	124	125	126	127
80	□	□	,	f	"	...	†	‡	^	‰	□	‘	□	□	□	□
	128	129	130	131	132	133	134	135	136	137	138	139	140	141	142	143
90	□	'	'	"	"	•	-	-	~	™	□)	□	□	□	□
	144	145	146	147	148	149	150	151	152	153	154	155	156	157	158	159
A0	□	□	¢	£	₪	¥	!	§	"	©	□	«	¬	-	®	™
	160	161	162	163	164	165	166	167	168	169	170	171	172	173	174	175
B0	°	±	²	³	'	μ	¶	·	□	¹	□	»	¼	½	¾	□
	176	177	178	179	180	181	182	183	184	185	186	187	188	189	190	191
C0	:	ˆ	ˆ	ˆ	ˆ	ˆ	ˆ	ˆ	ˆ	ˆ	ˆ	ˆ	ˆ	ˆ	ˆ	ˆ
	192	193	194	195	196	197	198	199	200	201	202	203	204	205	206	207
D0			:	ן	ו	ו	ו	□	□	□	□	□	□	□	□	□
	208	209	210	211	212	213	214	215	216	217	218	219	220	221	222	223
E0	א	ב	ג	ד	ה	ו	ז	ח	ט	י	ך	כ	ל	ם	מ	ן
	224	225	226	227	228	229	230	231	232	233	234	235	236	237	238	239
F0	נ	ס	ע	ף	פ	ץ	ק	ר	ש	ת	□	□	□	□	□	□
	240	241	242	243	244	245	246	247	248	249	250	251	252	253	254	255

Character Sets for PC

Character set: Turkish

Supported Language:

Albanian, Bretonian, Catalanian, Dutch, English, Finnish, French, German, Irish, Italian, Kurdish, Portuguese, Rhaeto-Romanic, Spanish, Swedish, Turkish

Windows Turkish (PT 103, 1254)

	0	1	2	3	4	5	6	7	8	9	A	B	C	D	E	F
20		!	"	#	\$	%	&	'	()	*	+	,	-	.	/
	32	33	34	35	36	37	38	39	40	41	42	43	44	45	46	47
30	0	1	2	3	4	5	6	7	8	9	:	;	<	=	>	?
	48	49	50	51	52	53	54	55	56	57	58	59	60	61	62	63
40	@	A	B	C	D	E	F	G	H	I	J	K	L	M	N	O
	64	65	66	67	68	69	70	71	72	73	74	75	76	77	78	79
50	P	Q	R	S	T	U	V	W	X	Y	Z	[\]	^	_
	80	81	82	83	84	85	86	87	88	89	90	91	92	93	94	95
60	`	a	b	c	d	e	f	g	h	i	j	k	l	m	n	o
	96	97	98	99	100	101	102	103	104	105	106	107	108	109	110	111
70	p	q	r	s	t	u	v	w	x	y	z	{		}	~	□
	112	113	114	115	116	117	118	119	120	121	122	123	124	125	126	127
80	€	□	,	f	"	...	†	‡	^	‰	Š	<	Œ	□	□	□
	128	129	130	131	132	133	134	135	136	137	138	139	140	141	142	143
90	□	'	'	"	"	•	—	—	~	™	š	>	œ	□	□	ÿ
	144	145	146	147	148	149	150	151	152	153	154	155	156	157	158	159
A0		ı	ç	£	¤	¥	ı	§	"	©	ª	«	¬	-	®	-
	160	161	162	163	164	165	166	167	168	169	170	171	172	173	174	175
B0	°	±	²	³	'	µ	¶	·	ı	º	»	¼	½	¾	¿	ı
	176	177	178	179	180	181	182	183	184	185	186	187	188	189	190	191
C0	À	Á	Â	Ã	Ä	Å	Æ	Ç	È	É	Ê	Ë	Ì	Í	Î	Ï
	192	193	194	195	196	197	198	199	200	201	202	203	204	205	206	207
D0	Ğ	Ń	Ò	Ó	Ô	Õ	Ö	×	Ø	Ù	Ú	Û	Ü	İ	Ş	ß
	208	209	210	211	212	213	214	215	216	217	218	219	220	221	222	223
E0	à	á	â	ã	ä	å	æ	ç	è	é	ê	ë	ì	í	î	ï
	224	225	226	227	228	229	230	231	232	233	234	235	236	237	238	239
F0	ğ	ñ	ò	ó	ô	õ	ö	÷	ø	ù	ú	û	ü	ı	ş	ÿ
	240	241	242	243	244	245	246	247	248	249	250	251	252	253	254	255

Character Sets for PC

Character set: Western

Supported Language:

Albanian, Bretonian, Catalanian, Danish, Dutch, English, Finnish, French, German, Iceland, Irish, Italian, Norwegian, Portuguese, Rhaeto-Romanic, Spanish, Swedish

Windows Western (PT 101, 1252)

	0	1	2	3	4	5	6	7	8	9	A	B	C	D	E	F
20		!	"	#	\$	%	&	'	()	*	+	,	-	.	/
	32	33	34	35	36	37	38	39	40	41	42	43	44	45	46	47
30	0	1	2	3	4	5	6	7	8	9	:	;	<	=	>	?
	48	49	50	51	52	53	54	55	56	57	58	59	60	61	62	63
40	@	A	B	C	D	E	F	G	H	I	J	K	L	M	N	O
	64	65	66	67	68	69	70	71	72	73	74	75	76	77	78	79
50	P	Q	R	S	T	U	V	W	X	Y	Z	[\]	^	_
	80	81	82	83	84	85	86	87	88	89	90	91	92	93	94	95
60	`	a	b	c	d	e	f	g	h	i	j	k	l	m	n	o
	96	97	98	99	100	101	102	103	104	105	106	107	108	109	110	111
70	p	q	r	s	t	u	v	w	x	y	z	{		}	~	□
	112	113	114	115	116	117	118	119	120	121	122	123	124	125	126	127
80	€	□	,	f	"	...	†	‡	^	‰	Š	<	Œ	□	Ž	□
	128	129	130	131	132	133	134	135	136	137	138	139	140	141	142	143
90	□	'	'	"	"	•	—	—	~	™	š	>	œ	□	ž	ÿ
	144	145	146	147	148	149	150	151	152	153	154	155	156	157	158	159
A0		ı	ø	£	¤	¥	ı	§	"	©	ª	«	¬	-	®	-
	160	161	162	163	164	165	166	167	168	169	170	171	172	173	174	175
B0	°	±	²	³	'	μ	¶	·	ı	º	»	¼	½	¾	¿	
	176	177	178	179	180	181	182	183	184	185	186	187	188	189	190	191
C0	À	Á	Â	Ã	Ä	Å	Æ	Ç	È	É	Ê	Ë	Ì	Í	Î	Ï
	192	193	194	195	196	197	198	199	200	201	202	203	204	205	206	207
D0	Ð	Ñ	Ò	Ó	Ô	Õ	Ö	×	Ø	Ù	Ú	Û	Ü	Ý	Þ	ß
	208	209	210	211	212	213	214	215	216	217	218	219	220	221	222	223
E0	à	á	â	ã	ä	å	æ	ç	è	é	ê	ë	ì	í	î	ï
	224	225	226	227	228	229	230	231	232	233	234	235	236	237	238	239
F0	ð	ñ	ò	ó	ô	õ	ö	÷	ø	ù	ú	û	ü	ý	þ	ÿ
	240	241	242	243	244	245	246	247	248	249	250	251	252	253	254	255

Character Sets for Mac

Character set: Central European

Supported Language:

Croatian, Czech, English, Estonian, Finnish, German, Hungarian, Irish, Latvian, Lithuanian, Polish, Slovak, Slovene, Sorbian

Mac Central European (PT 202)

	0	1	2	3	4	5	6	7	8	9	A	B	C	D	E	F
20		!	"	#	\$	%	&	'	()	*	+	,	-	.	/
	32	33	34	35	36	37	38	39	40	41	42	43	44	45	46	47
30	0	1	2	3	4	5	6	7	8	9	:	;	<	=	>	?
	48	49	50	51	52	53	54	55	56	57	58	59	60	61	62	63
40	@	A	B	C	D	E	F	G	H	I	J	K	L	M	N	O
	64	65	66	67	68	69	70	71	72	73	74	75	76	77	78	79
50	P	Q	R	S	T	U	V	W	X	Y	Z	[\]	^	_
	80	81	82	83	84	85	86	87	88	89	90	91	92	93	94	95
60	`	a	b	c	d	e	f	g	h	i	j	k	l	m	n	o
	96	97	98	99	100	101	102	103	104	105	106	107	108	109	110	111
70	p	q	r	s	t	u	v	w	x	y	z	{		}	~	□
	112	113	114	115	116	117	118	119	120	121	122	123	124	125	126	127
80	À	Ā	ā	Ĕ	Ā	Ö	Ü	á	ą	Č	ā	č	Ć	ć	é	Ž
	128	129	130	131	132	133	134	135	136	137	138	139	140	141	142	143
90	ž	Đ	í	đ	Ē	ē	Ē	ó	è	ô	õ	õ	ú	Ě	ě	ü
	144	145	146	147	148	149	150	151	152	153	154	155	156	157	158	159
A0	†	°	€	£	§	•	¶	β	®	©	™	è	ˆ	Đ	ğ	İ
	160	161	162	163	164	165	166	167	168	169	170	171	172	173	174	175
B0	ı	Ī	≤	≥	ī	Ɔ	đ	Σ	ł	Ł	ł	Ł	ł	Ł	ł	Ń
	176	177	178	179	180	181	182	183	184	185	186	187	188	189	190	191
C0	ñ	Ń	¬	√	ń	Ń	Δ	«	»	...		ñ	Ń	Ń	ó	Ń
	192	193	194	195	196	197	198	199	200	201	202	203	204	205	206	207
D0	—	—	“	”	‘	’	÷	◊	ō	Ŕ	í	Ŕ	<	>	ř	Ŕ
	208	209	210	211	212	213	214	215	216	217	218	219	220	221	222	223
E0	ř	Š	,	”	š	Š	ś	Á	Ť	ť	Ī	Ž	ž	Ū	Ō	Ō
	224	225	226	227	228	229	230	231	232	233	234	235	236	237	238	239
F0	ū	Ū	Ū	ű	Ū	ű	U	u	Y	ý	k	Ž	Ł	ž	G	˘
	240	241	242	243	244	245	246	247	248	249	250	251	252	253	254	255

Character Sets for Mac

Character set: Cyrillic

Supported Language:

Abasinian, Adygeish, Avarish, Balkarian, Belorussian, Bulgarian, Chechenish, Darginish, English, Ingushian, Kabardino-Cherkesian, Kumykish, Lakish, Lesginian, Macedonian, Mordovsko-Ersatian, Mordovsko-Mokshanian, Nanaish, NenishNivkh, Nogaian, Russian, Selkup, Serbian, Tabasaranish, Ukrainian

Mac Cyrillic Standard (PT 251)

	0	1	2	3	4	5	6	7	8	9	A	B	C	D	E	F
20		!	"	#	\$	%	&	'	()	*	+	,	-	.	/
30	0	1	2	3	4	5	6	7	8	9	:	;	<	=	>	?
40	@	A	B	C	D	E	F	G	H	I	J	K	L	M	N	O
50	P	Q	R	S	T	U	V	W	X	Y	Z	[\]	^	_
60	`	a	b	c	d	e	f	g	h	i	j	k	l	m	n	o
70	p	q	r	s	t	u	v	w	x	y	z	{		}	~	□
80	А	Б	В	Г	Д	Е	Ж	З	И	Й	К	Л	М	Н	О	П
90	Р	С	Т	У	Ф	Х	Ц	Ч	Ш	Щ	Ъ	Ы	Ь	Э	Ю	Я
A0	†	°	Г	£	§	•	¶	І	®	©	™	Ђ	ђ	≠	Ѓ	ѓ
B0	∞	±	≤	≥	і	и	г	Ј	Є	е	Ї	ї	Љ	љ	Њ	њ
C0	ј	ѕ	¬	√	ƒ	≈	Δ	«	»	…	Ђ	ђ	Ѓ	ѓ	ѕ	ѕ
D0	—	—	“	”	‘	’	÷	”	Ў	ў	Ц	ц	№	Ё	ё	я
E0	а	б	в	г	д	е	ж	з	и	й	к	л	м	н	о	п
F0	р	с	т	у	ф	х	ц	ч	ш	щ	ъ	ы	ь	э	ю	€

Character Sets for Mac

Character set: Greek

Supported Language:

English, Greek

Mac Greek Monotonic (PT 221)

	0	1	2	3	4	5	6	7	8	9	A	B	C	D	E	F
20		!	"	#	\$	%	&	'	()	*	+	,	-	.	/
	32	33	34	35	36	37	38	39	40	41	42	43	44	45	46	47
30	0	1	2	3	4	5	6	7	8	9	:	;	<	=	>	?
	48	49	50	51	52	53	54	55	56	57	58	59	60	61	62	63
40	@	A	B	C	D	E	F	G	H	I	J	K	L	M	N	O
	64	65	66	67	68	69	70	71	72	73	74	75	76	77	78	79
50	P	Q	R	S	T	U	V	W	X	Y	Z	[\]	^	_
	80	81	82	83	84	85	86	87	88	89	90	91	92	93	94	95
60	`	a	b	c	d	e	f	g	h	i	j	k	l	m	n	o
	96	97	98	99	100	101	102	103	104	105	106	107	108	109	110	111
70	p	q	r	s	t	u	v	w	x	y	z	{		}	~	
	112	113	114	115	116	117	118	119	120	121	122	123	124	125	126	127
80	À	¹	²	É	³	Ö	Ü	ˆ	à	â	ã	´	¨	ç	é	è
	128	129	130	131	132	133	134	135	136	137	138	139	140	141	142	143
90	ê	ë	£	™	î	ï	•	½	‰	ô	ö	¸	-	ù	û	ü
	144	145	146	147	148	149	150	151	152	153	154	155	156	157	158	159
A0	†	Γ	Δ	Θ	Λ	Ξ	Π	Β	®	©	Σ	Ï	§	≠	°	·
	160	161	162	163	164	165	166	167	168	169	170	171	172	173	174	175
B0	Α	±	≤	≥	¥	Β	Ε	Ζ	Η	Ι	Κ	Μ	Φ	Υ	Ψ	Ω
	176	177	178	179	180	181	182	183	184	185	186	187	188	189	190	191
C0	ά	Ν	¬	Ο	Ρ	≈	Τ	«	»	...	Υ	Χ	Ά	Έ	œ	
	192	193	194	195	196	197	198	199	200	201	202	203	204	205	206	207
D0	—	—	“	”	‘	’	÷	Η	Ι	Ο	Υ	έ	ή	ί	ό	Ω
	208	209	210	211	212	213	214	215	216	217	218	219	220	221	222	223
E0	ύ	α	β	ψ	δ	ε	φ	γ	η	ι	ξ	κ	λ	μ	ν	ο
	224	225	226	227	228	229	230	231	232	233	234	235	236	237	238	239
F0	π	ώ	ρ	σ	τ	θ	ω	ς	χ	υ	ξ	ϊ	ϋ	ϊ	ϋ	
	240	241	242	243	244	245	246	247	248	249	250	251	252	253	254	255

Character Sets for Mac

Character set: Hebrew

Supported Language:

English, Hebrew

Mac Hebrew (PT 231)

	0	1	2	3	4	5	6	7	8	9	A	B	C	D	E	F		
20		!	"	#	\$	%	&	'	()	*	+	,	-	.	/		
	32	33	34	35	36	37	38	39	40	41	42	43	44	45	46	47		
30	0	1	2	3	4	5	6	7	8	9	:	;	<	=	>	?		
	48	49	50	51	52	53	54	55	56	57	58	59	60	61	62	63		
40	@	A	B	C	D	E	F	G	H	I	J	K	L	M	N	O		
	64	65	66	67	68	69	70	71	72	73	74	75	76	77	78	79		
50	P	Q	R	S	T	U	V	W	X	Y	Z	[\]	^	_		
	80	81	82	83	84	85	86	87	88	89	90	91	92	93	94	95		
60	`	a	b	c	d	e	f	g	h	i	j	k	l	m	n	o		
	96	97	98	99	100	101	102	103	104	105	106	107	108	109	110	111		
70	p	q	r	s	t	u	v	w	x	y	z	{		}	~			
	112	113	114	115	116	117	118	119	120	121	122	123	124	125	126	127		
80	À	á	Ç	È	É	Ë	Ï	Ó	Ô	á	â	ã	ä	å	ç	é	è	
	128	129	130	131	132	133	134	135	136	137	138	139	140	141	142	143	144	
90	ë	ẽ	í	ì	ï	ĩ	ñ	ó	ô	õ	ö	õ	ú	ù	û	ü		
	144	145	146	147	148	149	150	151	152	153	154	155	156	157	158	159	160	
A0		!	"	#	\$	%	&	'	()	*	+	,	-	.	/		
	160	161	162	163	164	165	166	167	168	169	170	171	172	173	174	175	176	
B0	0	1	2	3	4	5	6	7	8	9	:	;	<	=	>	?		
	176	177	178	179	180	181	182	183	184	185	186	187	188	189	190	191	192	
C0	ש	"	"	"	"	"	"	י	ך	...		׳	״	׳	״	׳	״	
	192	193	194	195	196	197	198	199	200	201	202	203	204	205	206	207	208	
D0	-	-	"	"	'	'	ש	ש	\	'	׳	״	׳	״	׳	״	׳	״
	208	209	210	211	212	213	214	215	216	217	218	219	220	221	222	223	224	
E0	א	ב	ג	ד	ה	ו	ז	ח	ט	י	ך	כ	ל	מ	נ	ן	ס	ס
	224	225	226	227	228	229	230	231	232	233	234	235	236	237	238	239	240	241
F0	ן	ד	ע	ף	פ	ץ	ק	ר	ש	ת	}]	{	[ו			
	240	241	242	243	244	245	246	247	248	249	250	251	252	253	254	255	256	257

Character Sets for Mac

Character set: Romanian

Supported Language:

Albanian, Bretonian, Catalanian, Dutch, English, Finnish, German, Irish, Italian, Portuguese, Rhaeto-Romanic, Romanian, Spanish, Swedish

Mac Romanian (PT 205)

	0	1	2	3	4	5	6	7	8	9	A	B	C	D	E	F
20		!	"	#	\$	%	&	'	()	*	+	,	-	.	/
	32	33	34	35	36	37	38	39	40	41	42	43	44	45	46	47
30	0	1	2	3	4	5	6	7	8	9	:	;	<	=	>	?
	48	49	50	51	52	53	54	55	56	57	58	59	60	61	62	63
40	@	A	B	C	D	E	F	G	H	I	J	K	L	M	N	O
	64	65	66	67	68	69	70	71	72	73	74	75	76	77	78	79
50	P	Q	R	S	T	U	V	W	X	Y	Z	[\]	^	_
	80	81	82	83	84	85	86	87	88	89	90	91	92	93	94	95
60	`	a	b	c	d	e	f	g	h	i	j	k	l	m	n	o
	96	97	98	99	100	101	102	103	104	105	106	107	108	109	110	111
70	p	q	r	s	t	u	v	w	x	y	z	{		}	~	□
	112	113	114	115	116	117	118	119	120	121	122	123	124	125	126	127
80	À	Á	Â	Ã	Ä	Å	Û	á	à	â	ã	ä	å	ç	é	è
	128	129	130	131	132	133	134	135	136	137	138	139	140	141	142	143
90	ê	ë	í	ì	î	ï	ñ	ó	ò	ô	õ	ö	ó	ù	û	ü
	144	145	146	147	148	149	150	151	152	153	154	155	156	157	158	159
A0	†	°	¢	£	§	•	¶	β	®	©	™	'	"	≠	À	Š
	160	161	162	163	164	165	166	167	168	169	170	171	172	173	174	175
B0	∞	±	≤	≥	¥	μ	∂	Σ	Π	π	∫	∂	∅	Ω	ă	ș
	176	177	178	179	180	181	182	183	184	185	186	187	188	189	190	191
C0	ı	ı	ı	ı	f	≈	Δ	«	»	...	À	Á	Â	Ã	œ	œ
	192	193	194	195	196	197	198	199	200	201	202	203	204	205	206	207
D0	—	—	“	”	‘	’	÷	◊	ÿ	ÿ	/	€	<	>	T	t
	208	209	210	211	212	213	214	215	216	217	218	219	220	221	222	223
E0	‡	·	,	”	‰	À	É	À	É	È	Ì	Ì	Ì	Ì	Ò	Ò
	224	225	226	227	228	229	230	231	232	233	234	235	236	237	238	239
F0	□	Ö	U	U	U	ı	^	~	-	˘	˘	˘	˘	˘	˘	˘
	240	241	242	243	244	245	246	247	248	249	250	251	252	253	254	255

Character Sets for Mac

Character set: Turkish

Supported Language:

Albanian, Bretonian, Catalanian, Dutch, English, Finnish, French, German, Irish, Italian, Kurdish, Norwegian, Portuguese, Rhaeto-Romanic, Spanish, Swedish, Turkish

Mac Turkish (PT 203)

	0	1	2	3	4	5	6	7	8	9	A	B	C	D	E	F
20		!	"	#	\$	%	&	'	()	*	+	,	-	.	/
	32	33	34	35	36	37	38	39	40	41	42	43	44	45	46	47
30	0	1	2	3	4	5	6	7	8	9	:	;	<	=	>	?
	48	49	50	51	52	53	54	55	56	57	58	59	60	61	62	63
40	@	A	B	C	D	E	F	G	H	I	J	K	L	M	N	O
	64	65	66	67	68	69	70	71	72	73	74	75	76	77	78	79
50	P	Q	R	S	T	U	V	W	X	Y	Z	[\]	^	_
	80	81	82	83	84	85	86	87	88	89	90	91	92	93	94	95
60	`	a	b	c	d	e	f	g	h	i	j	k	l	m	n	o
	96	97	98	99	100	101	102	103	104	105	106	107	108	109	110	111
70	p	q	r	s	t	u	v	w	x	y	z	{		}	~	□
	112	113	114	115	116	117	118	119	120	121	122	123	124	125	126	127
80	Ä	Å	Ç	É	Ñ	Ö	Ü	á	à	â	ã	ä	å	ç	é	è
	128	129	130	131	132	133	134	135	136	137	138	139	140	141	142	143
90	ê	ë	í	ì	î	ï	ñ	ó	ò	ô	õ	ö	ú	ù	û	ü
	144	145	146	147	148	149	150	151	152	153	154	155	156	157	158	159
A0	†	°	¢	£	§	•	¶	β	®	©	™	'	"	≠	Æ	Ø
	160	161	162	163	164	165	166	167	168	169	170	171	172	173	174	175
B0	∞	±	≤	≥	¥	μ	∂	Σ	Π	π	∫	ª	º	Ω	æ	ø
	176	177	178	179	180	181	182	183	184	185	186	187	188	189	190	191
C0	ı	İ	ı	ı	f	≈	Δ	«	»	…	À	Á	Â	Ã	œ	œ
	192	193	194	195	196	197	198	199	200	201	202	203	204	205	206	207
D0	—	—	“	”	‘	’	÷	◊	ÿ	Ÿ	Ğ	ğ	İ	ı	Ş	ş
	208	209	210	211	212	213	214	215	216	217	218	219	220	221	222	223
E0	‡	·	‚	„	‰	Ā	Ē	Ă	Ĕ	Ė	Į	İ	İ	İ	İ	Ō
	224	225	226	227	228	229	230	231	232	233	234	235	236	237	238	239
F0	□	Ō	Ū	Ū	Ū	ı	ˆ	˜	˘	˙	˚	˛	˜	˜	˜	˜
	240	241	242	243	244	245	246	247	248	249	250	251	252	253	254	255

Character Sets for Mac

Character set: Western

Supported Language:

Albanian, Bretonian, Catalanian, Danish, Dutch, English, Finnish, French, German, Irish, Italian, Norwegian, Portuguese, Rhaeto-Romanic, Spanish, Swedish

Mac Western (PT 201)

	0	1	2	3	4	5	6	7	8	9	A	B	C	D	E	F
20		!	"	#	\$	%	&	'	()	*	+	,	-	.	/
	32	33	34	35	36	37	38	39	40	41	42	43	44	45	46	47
30	0	1	2	3	4	5	6	7	8	9	:	;	<	=	>	?
	48	49	50	51	52	53	54	55	56	57	58	59	60	61	62	63
40	@	A	B	C	D	E	F	G	H	I	J	K	L	M	N	O
	64	65	66	67	68	69	70	71	72	73	74	75	76	77	78	79
50	P	Q	R	S	T	U	V	W	X	Y	Z	[\]	^	_
	80	81	82	83	84	85	86	87	88	89	90	91	92	93	94	95
60	`	a	b	c	d	e	f	g	h	i	j	k	l	m	n	o
	96	97	98	99	100	101	102	103	104	105	106	107	108	109	110	111
70	p	q	r	s	t	u	v	w	x	y	z	{		}	~	□
	112	113	114	115	116	117	118	119	120	121	122	123	124	125	126	127
80	Ä	Å	Ç	É	Ñ	Ö	Ü	á	à	â	ã	ä	å	ç	é	è
	128	129	130	131	132	133	134	135	136	137	138	139	140	141	142	143
90	ê	ë	í	ì	î	ï	ñ	ó	ò	ô	õ	ö	ú	ù	û	ü
	144	145	146	147	148	149	150	151	152	153	154	155	156	157	158	159
A0	†	°	¢	£	§	•	¶	β	®	©	™	'	"	≠	Æ	Ø
	160	161	162	163	164	165	166	167	168	169	170	171	172	173	174	175
B0	∞	±	≤	≥	¥	μ	∂	Σ	Π	π	∫	ª	º	Ω	æ	ø
	176	177	178	179	180	181	182	183	184	185	186	187	188	189	190	191
C0	¿	¡	¬	√	ƒ	≈	Δ	«	»	…		À	Á	Â	Ã	œ
	192	193	194	195	196	197	198	199	200	201	202	203	204	205	206	207
D0	—	—	“	”	‘	’	÷	◊	ÿ	ÿ	/	€	<	>	fi	fl
	208	209	210	211	212	213	214	215	216	217	218	219	220	221	222	223
E0	‡	·	‚	„	‰	À	Á	Ä	Å	È	É	Ì	Î	Ï	Ò	Õ
	224	225	226	227	228	229	230	231	232	233	234	235	236	237	238	239
F0	□	Ò	Ú	Û	Ü	ı	ˆ	˜	˘	˙	˚	˛	˜	˝	˝	˝
	240	241	242	243	244	245	246	247	248	249	250	251	252	253	254	255

URW++ Design & Development GmbH
Poppenbütteler Bogen 36
D-22399 Hamburg, Germany

© URW++ Design & Development GmbH,
Hamburg, 2002

All rights reserved. This work is subject to copyright.
No part of this publication may be reproduced or used in
any form or by any means – graphic, electronic, or mechanical,
including photocopying, recording, taping, or information
storage and retrieval systems – without prior written permission of
URW++ Design & Development GmbH, Hamburg.

Alle Rechte vorbehalten. Dieses Werk ist urheberrechtlich geschützt.
Kein Teil dieser Publikation darf ohne Genehmigung der
URW++ Design & Development GmbH, Hamburg, reproduziert
oder unter Verwendung elektronischer, mechanischer oder
fototechnischer Systeme verarbeitet oder verbreitet werden.

Subject to technical modifications.
Änderungen sind vorbehalten.
Printed in Germany.

Concept and design:
Konzeption und Gestaltung:
pur.pur GmbH Visuelle Kommunikation, Kiel

Distributed by:

Smart Link Corporation
800-256-4814 949-552-1599
www.smartlinkcorp.com



Design & Development GmbH
Poppenbütteler Bogen 36
D-22399 Hamburg
Telefon +49 (40) 60 60 50
Fax +49 (40) 60 60 51 11
<http://www.urwpp.de>
info@urwpp.de