

**Informatic, Smart Link**

Version 2.x  
**POCKET CONTEXT**  
Electronic Dictionaries System for Pocket PC

**User's Guide**

**2000**

# Copyright Notice

Copyright 1997-2000 Informatic, Russia and Smart Link Corp. USA. All Rights Reserved.

All parts of the software product documentation are copyrighted and all rights are reserved. The documentation may not, in whole or part, be copied, photocopied, reproduced, stored, translated or reduced to any electronic medium or machine readable form without prior consent, in writing, from Informatic and Smart Link.

Information in this document is subject to change without notice and does not represent a commitment on the part of Informatic. The software described in this document is furnished under a license agreement. The software may be used or copied only in accordance with the terms of the agreement. It is against the law to copy Pocket Context for any purpose other than the personal use of the customer.

Pocket Context is a trademark of Informatic and Smart Link Corporation.

MS Windows CE is the trademark of Microsoft Corporation. Other brand and product names are trademarks or registered trademarks of their respective holders.

All trademarks are acknowledged.

## Published and Distributed by:

Smart Link Corporation  
18401 Von Karman Ave., Suite 450  
Irvine, CA 92612  
Tel: 949 552 1599 Fax: 949 552 1699  
E-mail: [smrtlnk@smartlinkcorp.com](mailto:smrtlnk@smartlinkcorp.com)

## Copyright

This Manual is copyrighted by Smart Link Corporation with all rights reserved. Under the copyright laws, this Manual cannot be reproduced in any form without the prior written permission of Informatic and Smart Link.  
© 2000 by Informatic and Smart Link Corporation.

---

# Contents

<b>Introduction .....</b>	<b>4</b>
Contents of the package .....	5
System Configuration Requirements .....	5
<b>Chapter 1. Installing and Starting Pocket Context .....</b>	<b>6</b>
How to Install Pocket CONTEXT .....	6
How to Uninstall Pocket CONTEXT .....	7
Registration of Try & Buy Copy of Pocket Context .....	8
Starting Pocket CONTEXT .....	8
Looking up words translation .....	9
<b>Chapter 2. Pocket CONTEXT Main Window .....</b>	<b>11</b>
Main Pocket CONTEXT Window Components .....	11
File Menu .....	11
Edit Menu .....	12
Help .....	12
<b>Chapter 3. Using Pocket CONTEXT .....</b>	<b>13</b>
Translation of Words .....	13
Translation of Phrases .....	14
Viewing Pocket CONTEXT Dictionary List .....	14

---

## Introduction

Pocket CONTEXT is a Multilingual Electronic dictionary system for Pocket PCs running Windows CE operating system, developed by Informativ and Smart Link Corporation.

Pocket CONTEXT translates words and phrases between two languages within a selected language pair using its knowledge of morphology.

It, therefore, recognizes and translates words in any grammatical form.

Pocket CONTEXT dictionaries number and their contents are growing continuously.

In today's market, Pocket CONTEXT is the only computer dictionary for Pocket PC capable of translating not only single words but common phrases and idiomatic expressions as well.

Pocket CONTEXT translates words and expressions without any special setup.



Work with CONTEXT is easy and convenient. Just enter a word or a phrase you want to translate into the CONTEXT entry field, and initiate the search with one touch of the stylus.

You can also copy and paste words and phrases from and to Pocket Word or Pocket Excel using the Clipboard. This is a very convenient way to work with Pocket CONTEXT.

### **Contents of the package**

The Pocket CONTEXT package contains:

- CD-ROM
- Pocket CONTEXT User's Guide
- License agreement
- User registration card

Be sure to fill out and mail the enclosed registration card to Smart Link Corporation. This will assure your free technical support.

### **System Configuration Requirements**

Pocket CONTEXT can be used with any hardware configuration supporting Windows CE 3.0 operating system, assuming availability of the following:

- Pocket PC (ARM, SH3 or MIPS)
- 6 MB RAM minimum
- Windows CE 3.0 Operating System
- Flash memory module (optional)

---

# Chapter 1. Installing and Starting Pocket Context

Pocket CONTEXT must be installed in Windows CE environment.

## How to Install Pocket CONTEXT

The installation of Pocket Context involves steps:

### Step 1. Desktop Installation

If you received the software on the CD-ROM:



- Insert Pocket CONTEXT CD-ROM into a corresponding drive.
- Copy the folder *Context\_“Language”* (*Context\_French*, *Context\_German*.....) to any place on your Pocket PC or Flash Memory Card.
- Go to Step 2.

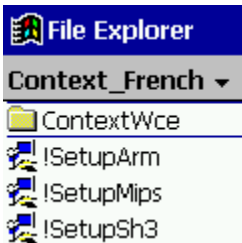
If you downloaded the software from the Internet:



- Locate and run the file you've just downloaded and saved. This will start the unzipping process and create the folder *Context\_“Language”* (*Context\_French*, *Context\_German*.....).
- Copy the *Context\_“Language”* folder into any place on your Pocket PC or Flash Memory Card.
- Go to Step 2.

If you received the software on a Flash Memory Card, start with the step 2.

### Step 2. Pocket PC Installation



- Locate and open *Context\_“Language”* folder on your Pocket PC
- Double-tap the *!SetupArm*, *!SetupMips* or *!SetupSh3* icon. Follow the on-screen instructions.

---

*Please note that only one out of three icons will be usable for the Setup (this product is designed to operate on ARM, MIPS and SH3 processors).*

---

# Installing and Starting Pocket Context

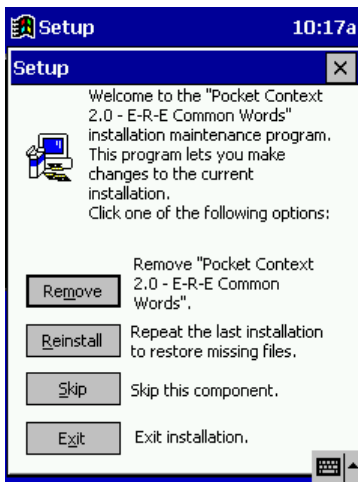


Follow the on-screen instructions:



Check *Current Location* to run from the current location or check *PDA Storage Memory* to run from the internal memory

## How to Uninstall Pocket CONTEXT

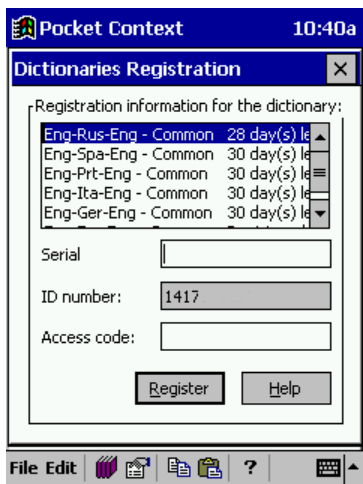


You can Uninstall the software at any time:

- Locate and open *Context\_“Language”* folder on your Pocket PC
- Double-tap the *!SetupArm*, *!SetupMips* or *!SetupSh3* icon. Follow the on-screen instructions.
- Tap the *Remove* button

## Installing and Starting Pocket Context

### Registration of Try & Buy Copy of Pocket Context




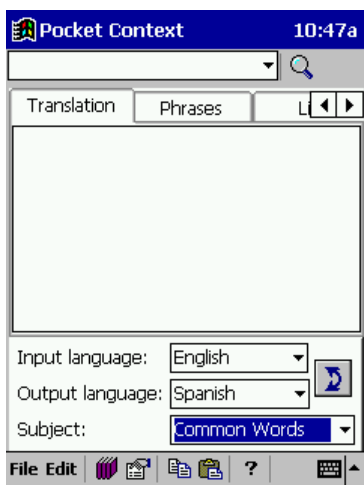
After installing the software you will be asked to register it within 30 days. In the registration box enter the *Serial Number* you received with the software. Provide the ID Number found in the second field to get the *Access Code*.

Enter the *Access Code* into the third field and tap *Register* to activate dictionaries.

### Starting Pocket CONTEXT



1. Tap  > *Programs* > *Pocket CONTEXT*.
2. Pocket CONTEXT will start.



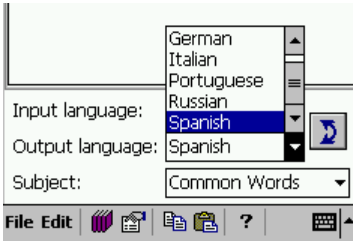


## Looking up words translation

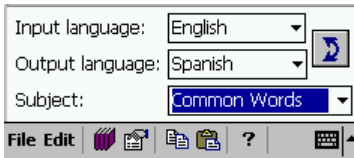
- On the bottom of the screen choose:



the *Input language* to select the translation direction



the *Output language* to select the translation direction



*Subject* to see the list of available dictionaries. Select the dictionary in which you want to look up the translation.



- Enter a word or phrase into the *Entry field* and double-tap the icon of the Magnifying glass.



- To change the *Input language*, tap the double-arrrowed icon.

## Installing and Starting Pocket Context



The translation of the searched word appears in the translation window.

If the translation pane is blank, no word was found.

Select the *List* tab to see the list of surrounding entries in alphabetical order.

Select the *Suggestion* tab to see the list of spelling suggestions in case you misspelled the entry.



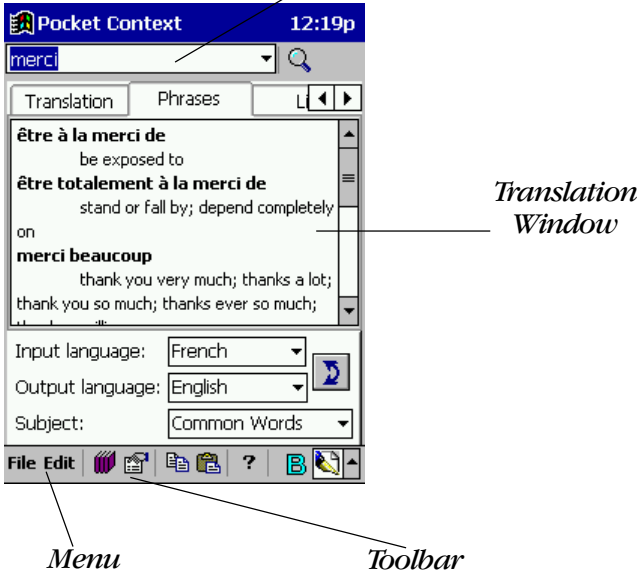
Select the *Phrases* tab to see the list of phrases containing the searched word.

---

## Chapter 2. Pocket CONTEXT Main Window

### Main Pocket CONTEXT Window Components

Pocket CONTEXT main window consists of the following components:



Pocket CONTEXT Main Menu contains the following four items, each with its own pull-down menu:

#### File Menu

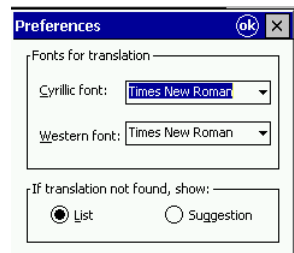


*Dictionaries Registration* - Registers the software.



*Preferences* - Customizes the following Pocket CONTEXT settings:

- Changes fonts to show translation.
- You can use the *Preferences* option in the *File* menu to set up the mode of displaying dictionary entries in case of no translation was found: *List* (alphabetical list) or *Suggestion* (spelling alternatives).



# Pocket CONTEXT Main Window

---

## Edit Menu



*Copy* - Copies selected text to the Clipboard



*Paste* - Inserts text from the Clipboard in the current cursor position

## Help



Provides on-line Help

Major Main Menu functions are duplicated by the Toolbar buttons.



Registers Dictionaries



Copies selected text to the Clipboard



Inserts text from the Clipboard



Opens CONTEXT Preferences window

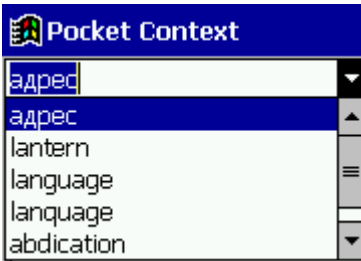


Provides on-line Help

The Word entry field also contains a drop-down list of all previously searched words and phrases (Search History).



To display this list, tap the arrow button.



Highlight and double-tap any line of this list to copy the entry into the Word entry field.

---

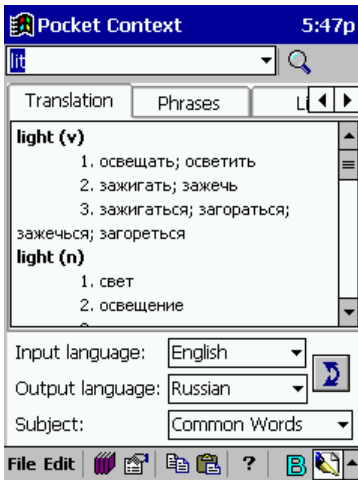
## Chapter 3. Using Pocket CONTEXT

After you entered a word or a phrase for translation and selected the translation direction, the following window appears:



### Translation of Words

Unlike the majority of competing programs, Pocket CONTEXT translates words not only in the basic but in all its morphological forms (“go”, “gone”, “went” etc.).



For example, if you enter the word “lit” and select the Common Words dictionary to search in, the Translation window will display the entered word into its initial form “light” and its translation as a the group of synonyms.

## Translation of Phrases

Pocket CONTEXT translates not only single words, but phrases and idiomatic expressions. For example, if you enter the word "merci", and select the *Phrase* tab, the following list of phrases will appear:



## Viewing Pocket CONTEXT Dictionary List



In case Pocket CONTEXT cannot find a word, it will display the list of surrounding words in the Translations window. The word, closest to the searched one, will be highlighted.